

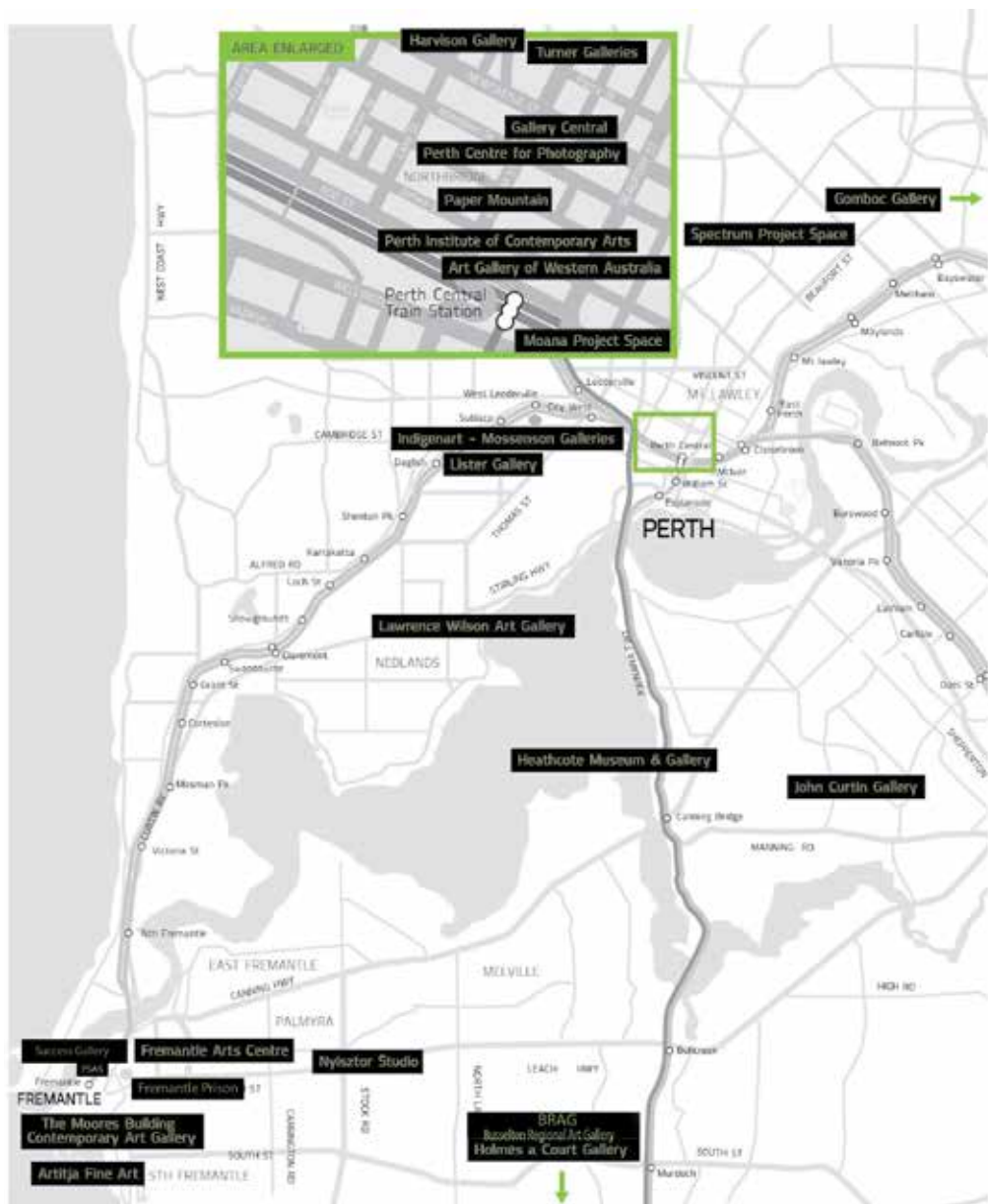
CIRCUIT

western australian
contemporary art



SEP - OCT 2016

circuitonline.com.au



circuitonline.com.au is the comprehensive visual arts listing for Contemporary Western Australian Galleries, Museums, Institutions, Artist-Run Initiatives and Project Spaces. Updated regularly to include current events, circuitonline.com.au is your most reliable and dedicated source of information about contemporary visual practice in Western Australia. CIRCUIT is the companion magazine published by Imagelab, this free publication is widely available and read by artists, curators, collectors and art lovers

4	ART GALLERY OF WESTERN AUSTRALIA
6	ART COLLECTIVE WA
8	BUNBURY REGIONAL ART GALLERY
10	PRISON GALLERY
12	FREMANTLE ARTS CENTRE
14	GALLERY CENTRAL
16	GOMBOC GALLERY SCULPTURE PARK
18	HEATHCOTE MUSEUM AND GALLERY
20	HOLMES a COURT GALLERY
22	JOHN CURTIN GALLERY
24	LAWRENCE WILSON ART GALLERY
26	ALCOA MANDURAH ART GALLERY THE MANDURAH PERFORMING ARTS CENTRE
28	THE MOORES BUILDING CONTEMPORARY ART GALLERY
30	PERTH INSTITUTE OF CONTEMPORARY ARTS (PICA)
32	SPECTRUM PROJECT SPACE
34	TURNER GALLERY
36	ARTITJA FINE ART
37	MOSENSON GALLERIES
38	ARTGEO GALLERY
39	MOANA PROJECT SPACE
40	NYISZTOR STUDIO
41	PAPER MOUNTAIN
42	PSART SPACE
43	PERTH CENTRE FOR PHOTOGRAPHY
44	SUCCESS GALLERY

Cover Image: William Kentridge, *Horse series (Promised Land,)* 2008, hand woven mohair tapestry, edition 3, 3.8 x 4.16m, courtesy of the artist, Private Collection @ Curtin Gallery

Back: Jacqueline Ball, *Back home, wet cheeks*, 2015, inkjet print on archival rag, 79 x 54cm, courtesy of the artist

ART GALLERY OF WESTERN AUSTRALIA

Perth Cultural Centre, Perth
Exhibitions and Shop hours: Wed – Mon, 10am – 5pm, closed Tuesdays
T: 9492 6600
E: admin@artgallery.wa.gov.au
artgallery.wa.gov.au

WA FOCUS – FINLANDISATION

JUHA TOLONEN

3 SEP – 21 NOV

Finlandisation brings together Juha Tolonen's landscape work from the past four years in Australia and Finland. Focusing on both his adoptive and ancestral homes, the new series unites the seemingly disparate landscapes of the Swan River hinterland and Lapland. While contrasts exist, Tolonen's new work also displays a surprising continuity.

SCREEN SPACE

MARY REID KELLEY

PRIAPUS AGONISTES

UNTIL 25 SEPT

One of a group of works made by young American artist Mary Reid Kelley that re-examine aspects of Greek mythology. Combining humour and tragedy, the film focuses on a minotaur roaming a labyrinth beneath a gymnasium, waiting for members of the losing team to be sent down as food.

OBJECTS GALLERY

GIFTS TO THE FALLEN

ONGOING

A pragmatic and sentimental response to death, and the ceremonies around it, from an Aboriginal perspective.

CRAFT & DESIGN GALLERY

RESONANT OBJECTS

ONGOING

Showcasing works across a range of mediums, and featuring works from Western Australian, Australian and international makers, this dedicated craft and design space allows for AGWA to express the many ways that craft and design practitioners use their materials to engage with the world.

Adam Goodrum *Chatterbox table* 2011.
Ceramic, 80 x 40 x 40 cm. State Art Collection, Art Gallery of Western Australia. Purchased through the Peter Fogarty Design Fund, Art Gallery of Western Australia Foundation, 2016.

CONTINENTAL SHIFT

UNTIL 5 FEB 2017

An exciting partnership between AGWA, Terra Foundation for American Art and UWA which sees 15 American landscape paintings shown in the context of their Australian counterparts. Accompanied by an undergraduate course run by the University of Western Australia and symposium at AGWA, this display strikes up new conversations between the US and Australia.

DISSENTING VOICES

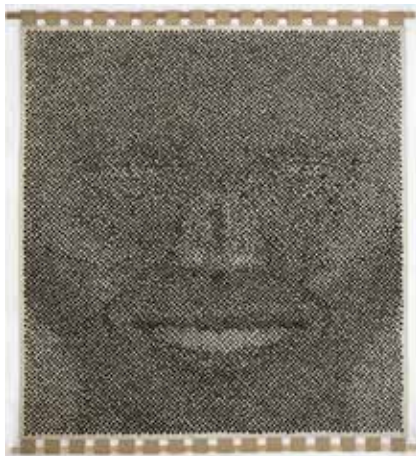
UNTIL 31 JAN 2017

Dissenting Voices explores how artists respond to social issues, cultural concerns and political events. Their art also provides poignant commentary on the human condition. Selected primarily from historical, Indigenous and contemporary work in the WA State Art Collection, the exhibition includes representations of acts of war and social conflict, through to contemporary reflections on protest and resistance.





W Benson
Out near Balingup 1864.
 Oil on board, 33.5 x 55 cm.
 State Art Collection,
 Art Gallery of Western Australia.
 Purchased 1991.



Tom Nicholson
Fragments from Melancholia
 (Documents after five actions, Berlin) 2001-2002,
 Berlin, Germany, *Melancholia* (Banner 4) 2002.
 Oil on linen, with sewn Hessian loops 307 x 270 cm
 (irregular). State Art Collection,
 Art Gallery of Western Australia.
 Gift of John McBride, 2010.

"UNKNOWN LAND"

SEE WA BEFORE IT WAS WA

17 SEP – 30 JAN

TICKETED

The first European explorers and colonists viewed Western Australia and its spectacular coast as an "unknown land". Of course, it was no such thing – Aboriginal people had owned the land for thousands of years and were quickly in conflict with the imperialists.

Whatever their motives – colonist, invader, explorer, settler, adventurer – the Europeans were awe struck by the land we now call Western Australia. This exhibition of the earliest watercolours, paintings and drawings of WA superbly captures images of iconic locations still familiar, but now mostly transformed.

PORTRAIT MONTH AND THE BLACK SWAN PRIZE

8 - 31 OCT

Portraits fascinate, commemorate, transform, reflect, iconise and sometimes distort their subject in endlessly fascinating variety. For the month of October, AGWA will celebrate the portrait as an art form, with a special focus on the works from the State Art Collection and the *Black Swan Prize for Portraiture*. Australia's third richest art prize, the *Black Swan Prize* featuring the \$50,000 Lester Group Prize, the \$7,500 Amana Living People's Choice Award, and the new \$10,000 Tony Fini Foundation Artist Prize.

MICRO GALLERIES – GARDEN AND SKY ONGOING

The Micro Galleries are displaying large works from the Wesfarmers Collection. Working with the concept of 'large works in small spaces', the selection of works for the first display begin with a conversation between Aboriginal and non-Aboriginal artists, and include works such as Brook Andrew's *Australia 1* 2013, William Delafield's *A Haystack* 1983, and Richard Bell's *Omega* (Bell's Theorem) 2013.

RISE SOUND GALLERY ONGOING

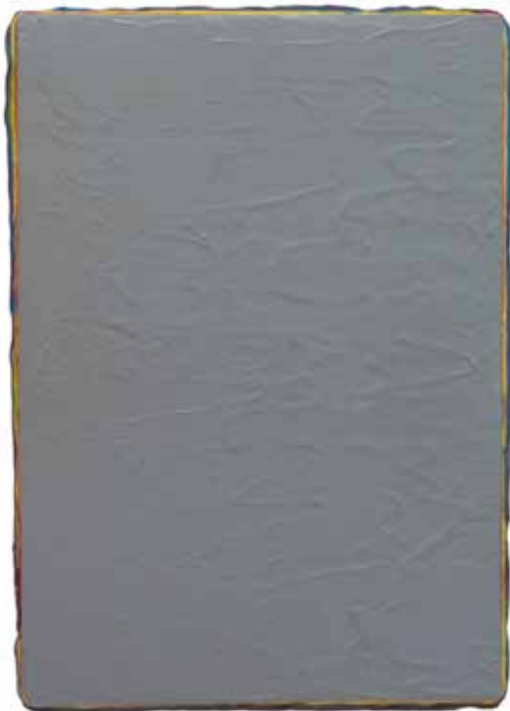
Created with the research expertise of wetland ecologist Jacqueline Giles, *Swamp Gospel*, a five-channel sound work by WA artist Mei Saraswati, the work, features Giles' recordings of long-necked turtle calls and sounds of underwater invertebrates. *Swamp Gospel* is an ode to the former wetland and lake site on which the Art Gallery is situated.

ART COLLECTIVE WA

115 Hay Street Subiaco WA 6008

Gallery hours: Wed - Fri 11am - 5pm, Sat 12 - 4 and by appointment

www.artcollectivewa.com.au art@artcollectivewa.com.au



Andre Lipscombe
Pot d'Or 2015
acrylic paint on board
31 x 22 x 2.5 cm

NEW PAINTINGS

ANDRE LIPSCOMBE

'I am compelled to make paintings. It begins with a vague idea and then expands in the physical world.' (A. Lipscombe 2016)

Andre Lipscombe is a visual artist based in Perth, Western Australia, whose practice is centered upon painting and drawing, collage, photography and print media such as artist's books.

He has exhibited regularly since graduating from the Western Australian Institute of Technology (now Curtin University) in 1983. In his early career Lipscombe was a member of a Perth based group of artists committed to representation and figuration, later exhibiting as Oddfellows. Over twenty years he conducted studio practices in Melbourne, Victoria (1990 - 1996) and Esperance, Western Australia (1997 - 2001) before situating himself at his current Artsource studio in Fremantle, Western Australia.



Paul Moncrieff
PAN-ARCH #5 2015
 Acrylic on beech – ply assembled panels
 60 x 120cm

NEW PAINTINGS PAUL MONCRIEFF

'Since 2010, my practice has evolved into the concrete, the non-objective object, non-figurative formalism. Using utilitarian workable plywood, timber supports, and pre mixed colours of acrylic paint I have assembled many varieties of hard-edged compositions. All work is constructed according to a self-imposed system of size and shape and assembled to offer a suggestion of the infinite possibilities within this system. The colours are used to compliment the built geometric shapes. Hand-made, brush-painted simple geometry is reminiscent of my preoccupation with visual games and indeed the work may be considered child-like in its simplicity.'

Moncrieff has been exhibiting since 1978 in gallery locations in Perth, regional WA and also on occasion in the Eastern States. In this time, he has had 20 solo, 6 shared and participated in a great many group exhibitions. His paintings, drawings and prints are now part of a considerable number of major public and private Australian art collections. Until 2007 he was the coordinator of the Painting and Drawing programme at Edith Cowan University, Mount Lawley WA campus. Over the years he has curated several thematic exhibitions. He now lives at Kentdale on the south coast of WA with artist Jillian Green. He has designed and built their house, studio, workshop orchard and vegetable garden. He continues to develop and evolve his art practice.

BUNBURY REGIONAL ART GALLERIES

64 Wittenoom St, Bunbury
Gallery Hours: Open 7 Days 10am-4pm
Free Admission
Ph: 08 9792 7323
www.brag.org.au artgallery@bunbury.wa.gov.au

NOONGAR COUNTRY 2016

RESILIENCE

EXHIBITION RUNS 13 AUG – 16 OCT

Featuring almost 70 works by artists residing on Noongar Country, this exhibition presents an overview of the diverse artistic practices of Indigenous artists in the South West region. This year's theme – Resilience – highlights the strength of the Indigenous community in the face of ongoing adversity, and celebrates the contribution of these artists to the wider Australian community.

SHAUN TAN

THE LOST THING: FROM BOOK TO FILM

EXHIBITION RUNS 13 AUG – 25 SEP

Exhibition Organised by The Australian Centre for the Moving Image, Melbourne

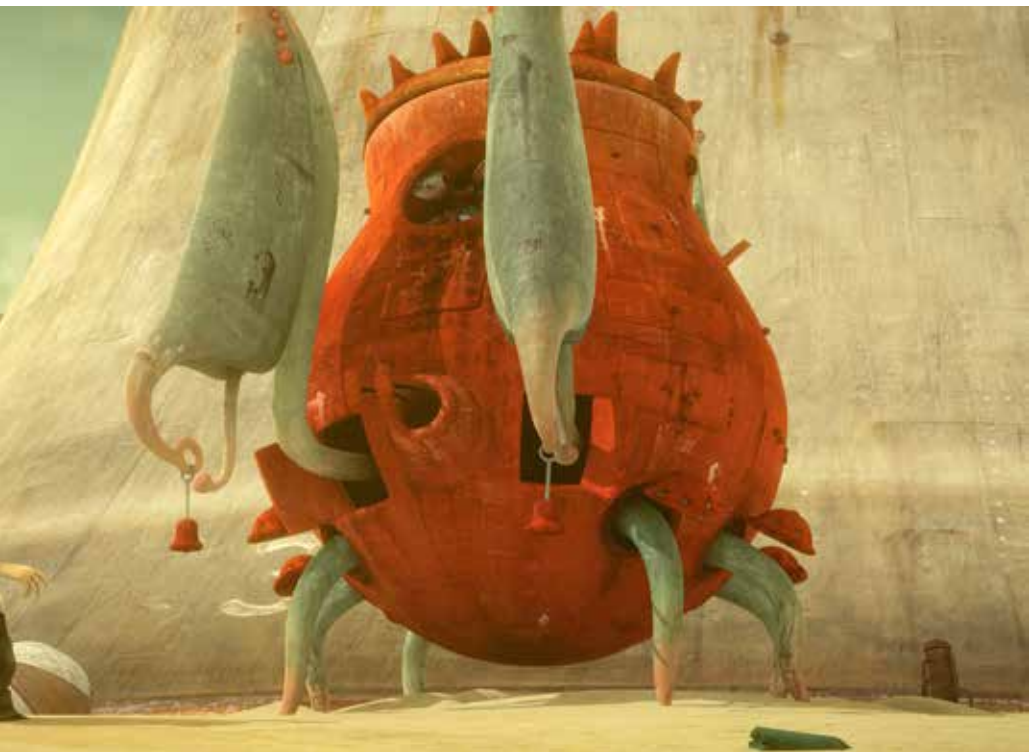
Explore the world of Shaun Tan's picture book *The Lost Thing* and discover how this intriguing fable was transformed into an Oscar®-winning short animation. The exhibition includes Shaun's original paintings and working drawings, as well as production footage and interviews with the animators and sound design team.

Shaun Tan
Film still from *The Lost Thing* (2010)
Courtesy: Passion Pictures Australia





Kye McGuire, *My Mother's Country*, 2015, acrylic on canvas



FREMANTLE PRISON

Fremantle Prison, The Terrace, Fremantle

Gallery hours: open 7 days, 9am - 5pm

Admission to the gallery is free

T 9336 9200

info@fremantleprison.com.au www.fremantleprison.com.au



Brett Leigh Dicks *Yard Wall and Razor Wire*, Fremantle Prison, 2015 photograph



Brett Leigh Dicks *Watch Tower*, Fremantle Prison, 2015 photograph

A QUIET CONVICTION: PHOTOGRAPHS OF DECOMMISSIONED PRISONS BY BRETT LEIGH DICKS 14 MAY - 6 NOV

'A Quiet Conviction' showcases a selection of photographs by Brett Leigh Dicks, taken at Fremantle Prison in 2015. The Fremantle Prison photographs are exhibited alongside a selection of his photographs of American gaols, prisons and penitentiaries. Now open to tourists, these sites are a reminder of past penal philosophies and testify to a rich social history.

Brett Leigh Dicks is an American photographer who shares his time between the United States and Australia. Employing the tradition of fine black and white photography, Brett investigates the landscape and the fragile ties that landscape shares with human history.

Exhibition merchandise, including limited edition framed and mounted prints, available for purchase.

INSIDER ART: SPRING 2016 3 SEP - 27 NOV

A joint initiative between the Department of Corrective Services and Fremantle Prison, Insider Art: Spring 2016 showcases the creative achievements of inmates currently serving sentences in Western Australian prisons. A range of educational programs, from recreational courses to university level qualifications, allows prisoners to commence an arts education while incarcerated, with some carrying their study through to degree level. For many it is their first positive educational experience and can be a means to strengthen ties with families, communities, culture and country. It can even offer possibilities for further study or employment upon release.

The exhibition is free of charge and many of the works are available for purchase.



Untitled Landscape acrylic on canvas

FREMANTLE PRISON ART TOUR

SATURDAY 3 SEP: 4 PM – 5.30PM

SATURDAY 5 NOV: 4PM – 5.30PM

BOOKING IS ESSENTIAL.

Fremantle Prison was used as a place of incarceration and punishment for 136 years. Throughout the Prison's long history, some inmates were granted special permission to paint as part of their rehabilitation, however for most of this time convicts and prisoners were prevented from painting or drawing on the walls. Prior to the Prison's closure in 1991, discipline was relaxed and inmates were given wide ranging permissions to draw on the walls of their cells and exercise yards.

Join one of Fremantle Prison's experienced guides for this exclusive art tour showcasing a variety of convict and prisoner artwork, including Aboriginal and European Landscapes, Dot Paintings, Graffiti and Tattoo Art, as well as 'hidden' art from the convict era.

Participants receive a complementary 40 page publication *Art Behind Bars: Murals and Graffiti of Fremantle Prison* with ticket purchase.



FREMANTLE ARTS CENTRE

1 Finnerty Street, Fremantle
Open 7 days, 10am – 5pm
Free admission
T 9432 9555
fac.org.au fac@fremantle.wa.gov.au



Matthew Ngui, *Every Point of View*, 2016, plastic pipes and real-time video projection. Photo by Rebecca Mansell

MATTHEW NGUI **EVERY POINT OF VIEW** UNTIL 17 SEP

In an Australian premiere, Fremantle Arts Centre presents Matthew Ngui's *Every Point of View*, a major work commissioned by Singapore Art Museum to mark 50 years of the state's independence. Featuring a series of broken statements on democracy written across a forest of PVC pipes, it is only from specific positions that the text can be read in full.

Fremantle Arts Centre Print Award supported by Little Creatures Brewing 2015 exhibition opening. Photo by Jessica Wyld



FREMANTLE ARTS CENTRE PRINT AWARD SUPPORTED BY LITTLE CREATURES BREWING
23 SEP – 12 NOV

Australia's premier showcase of prints and artist's books returns with a selection of the best works from established, emerging and cross-disciplinary artists. In 2016 the Fremantle Arts Centre Print Award presents works that celebrate classical printmaking while simultaneously embracing cutting-edge interpretations of the medium.

GOSIA WLODARCZAK | A ROOM WITHOUT A VIEW (EXTENDED)
23 SEPT – 12 NOV

Gosia Wlodarczak will draw directly onto FAC's gallery walls in a three-week endurance performance. Closeted and isolated inside the gallery, Wlodarczak will draw in a state of sensory deprivation as viewers watch the artist's progress via a screen outside. On Sunday 16 October, Wlodarczak will leave the room and visitors will be invited inside to view the completed work.

Showing alongside will be a survey exhibition of Wlodarczak's work, *Many Happy Landings*, curated by the artist and City of Fremantle Art Collection Curator André Lipscombe.

Gosia Wlodarczak, *A Room Without A View*, 2013

A 17-day drawing performance in isolation and a drawing installation inside the specially constructed cube at the RMIT Gallery, Melbourne. Pigment pen on wall.

Installation dimensions: 340 x 220 x 260cm.

Photo by Longin Sarnecki. Image courtesy of the artist, RMIT Gallery Melbourne and Museum of Contemporary Art Sydney



GALLERY CENTRAL

NORTH METROPOLITAN TAFE (FORMERLY CENTRAL)

12 Aberdeen Street, Perth

Gallery hours: Mon – Fri, 10am – 4.45pm, Sat 12 – 4pm (varies)

T 9427 1318

gallerycentral.com.au gallery@nmtafe.wa.edu.au

MACROIMICRO

EXPLORATIONS IN FELT

UNTIL 10 SEPT

Feltwest feltmakers explore the MACRO and micro worlds through innovative technology, pushing their ancient craft into new realms of shape, pattern and texture in felt. Using a variety of textile and felting art skills and techniques, members show garments and sculptures.

GRAND GESTURES

GEORGE HOWLETT

9 - 17 SEPT

Central graduate shows paintings and sculptures considering the way light and colour interact with each other.

SHOWROOM 16

14 - 17 SEPT

New directions in product and furniture design - the very latest explorative and innovative designs produced by students from our Product Design course - some of WA's best and brightest emerging designers.

BLEND 43

JAMES COOPER

22 - 1 OCT

Illustrative drawing and painting in response to low-brow, fringe graffiti. Musings upon fluidity, image banks of free association without hierarchy. Presented in collaboration with Free Range Gallery.

FLOW

27 SEP - 15 OCT

Artists trained at TAFE have a great reputation as makers. In this exhibition, graduates from years gone by show work that teases out the tension between solidity and liquidity in sculpture or in some way addresses the mechanics of fluids. Artist include Kathy Allam, David Brophy, Miik Green, Paul Kaptein, Angela McHarrie, Karen Millar, Lisa Dymond, Helen Seiver, Pascal Proteau, Sarah Wilkinson



George Howlett *LIGHT*

NO SECOND PRIZE - event TUES 1 November
27 OCT – 5 NOV

Artists concerned for the welfare of all animals show cruelty free art works. (Non) punters are invited to a celebratory event that provides a 'sweepstake free' alternative to the Melbourne Cup. Proceeds donated to an animal welfare. Curator Claire Bushby.

STAINS BY BEN MITCHELL

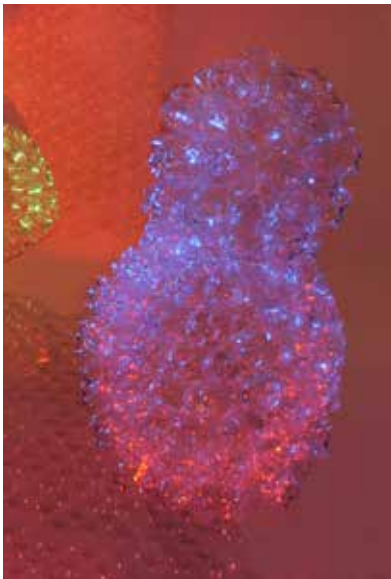
21 - 29 OCT

Paintings on plywood that explore ways in which a repurposed object can be given new life. Stains explores geometric forms in conjunction with monochromatic colour fields and mark making that merges the two.

Ben Mitchell *Stains* 2016
oil on plywood 40x40



Kathy Allam



Eva Fernández *Platero y Yo* 2015



GOMBOC GALLERY SCULPTURE PARK

James Road, Middle Swan
Gallery hours: Wed – Sun, 10am – 5pm
Free admission
T 9274 3996
gomboc-gallery.com.au rm@gomboc-gallery.com.au



R.M. (Ron) Gomboc *Family* Copper



Hiroyuki Kita *To Sea* Stainless Steel

SEPTEMBER

Group exhibitions, with paintings and sculpture by local, national and international artists.

ROBERT JUNIPER – A CELEBRATION EXHIBITION

9 OCT - 6 NOV

Collection of artwork created prior to 2007 – paintings drawings and graphics

Gomboc Gallery is celebrating 34 years since establishment and is now one of the oldest commercial galleries and the only sculpture park open free to the public in Western Australia.

The 4.5 hectare Sculpture Park has the largest display of outdoor Sculptures by local, national and international sculptors available in Western Australia. The sculptures range from smaller sculptures to larger monumental works in a variety of materials.

The main gallery which consists of five individual indoor gallery exhibition spaces has changing solo and group exhibitions, with paintings and sculpture by local, national and international artists.



Robert Juniper
Me, and the Wild Bull of Chalmondely Hollow 2000
Oil, Acrylic and gold leaf on Belgian Linen 163 x 122cm

HEATHCOTE MUSEUM & GALLERY

Heathcote Cultural Centre, Duncraig Road, Applecross
Gallery hours: Tue – Fri, 10am – 3pm, Sat to Sun 12 – 4pm
Closed Mondays and Public Holidays, free admission
T 9364 5666
melvillecity.com.au/heathcote heathcote@melville.wa.gov.au

PASCAL PROTEAU

STIGMA

A solo exhibition by Pascal Proteau.

UNTIL 25 SEP

STIGMA invites you to contemplate the nature of your own humanity. Pascal Proteau creates art works of strong visual form which reflect his internal experience. He struggles to be able to articulate this experience, but the organic nature of these forms speaks loudly. He asks you simply to allow yourself to reflect on his experience, your own and others.

Pascal works with many different types of timbers and old, obsolete tools to create art works that are desirable and tactile. He is powerfully drawn to create works that explore force and capture both motion and process, in their state of flux.

Pascal Proteau *Untitled 4*, 2016, Silver Birch & Steel Wire, 100mm x 200mm x 110mm



HEATHCOTE SELECT GROUP SHOW

1 OCT - 6 NOV

OPENING NIGHT: 30 SEP, 6 - 8.PM

Heathcote Museum & Gallery is proud to present Heathcote Select, an exhibition of Western Australian artists selected by curator Jana Braddock.

JESS DAY

REBECCA JENSEN

SALLY MULHOLLAND

TAYLOR DENNING

ZHANNA KOLPAKOVA

SUSAN RAUX

MATTHEW MCALPINE

Taylor Denning, *Self Portrait*, 2016, Plaster of Paris, 150mm x 240mm x 40mm



HOLMES A COURT GALLERY AT VASSE FELIX

Vasse Felix, Cnr Tom Cullity Dr & Caves Rd, Cowaramup
Gallery hours: Mon – Sun, 10am – 5pm
free admission
T 6217 2640
holmesacourtgallery.com.au hacgallery@heytesbury.com.au



Rachel Coad
Place 2015
oil on linen,
187 x 175 cm
Image courtesy and copyright the artist.

RACHEL COAD

RETROspective: artist-in-residence exhibition closing on 18 September 2016.
In association with Gallerysmith, Melbourne.

This exhibition includes paintings and drawings from the artist's earliest work to the very latest new work.

Rachel Coad was raised in rural Western Australia. Her painting practice spans 15 years, she has exhibited in Perth, Melbourne and London and been short-listed for several awards. Her painting, generally figurative work in oil on linen, has been described as technically and conceptually astute and is recognised for its distinct, emotive style.

A TASTE OF SUMMER

25 SEP - 29 JAN 2017
In association with artCollectiveWA

This exhibition will show selected contemporary and historical works from the collection that reflect the heat, the cool, and the activities of the Australian summer.
Artists include-

Rene Collet D'Herbois, Herbert William Gibbs, Jesse Hilder, Sandra Leveson-Meares, Wally Mandaark, Duncan McGregor Whyte, John Oldham, John Olsen, Lorna Prendiville, Lloyd Rees, Keera Slavin, Archibald Bertram Webb,

We have also invited four artCollectiveWA artists to participate - Penny Coss, Jo Darbyshire, Jeremy Kirwan-Ward and Joanna Lamb.

John Olsen
Summer in Queensland 1978
 colour lithograph (artist's proof)
 92 x 74 cm
 Courtesy and copyright the artist.



Jeremy Kirwan-Ward
Surface Writing (CQ3) 2015
 acrylic on canvas (3 panels)
 190 x 195 cm
 Courtesy and copyright the artist



JOHN CURTIN GALLERY

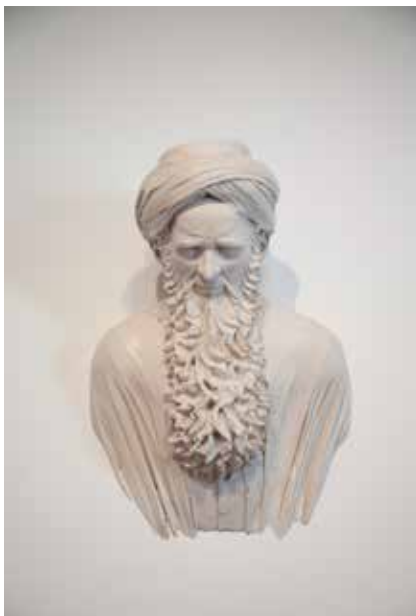
Curtin University, Building 200A, Kent Street, Bentley
Gallery hours: Mon – Fri, 11am – 5pm, Sunday, 1pm – 5pm
Free admission
T 9266 4155
johncurtingallery.curtin.edu.au gallery@curtin.edu.au

INVISIBLE GENRES CURATED BY JOHN MATEER

Invisible Genres marks the 400th anniversary of the first European landing on the coast of Western Australia in a fascinating international project featuring artists from the Netherlands, South Africa, Indonesia and Australia. Commemorating this anniversary with an exhibition of contemporary art, Invisible Genres emphasises the continuing ramifications of the connections and parallels that exist between the four countries in their histories and politics.

Invisible Genres explores the vestiges of cultural phenomena that appeared at the cusp of the Golden Age of Dutch expansion in the early 17th Century – a period that saw the West Australian coast become a place feared by navigators for centuries as they confronted it, at the end of their journey across the southern Indian Ocean on their way to what soon became known as the Dutch East Indies. 400 years after Hartog's initial Dutch landfall at Shark Bay in 1616, Invisible Genres traces remnants of new modes of artistic production and genres of practise. These remnants of Dutch culture remain embedded in the contemporary art practise of artists from the four countries that mark this trade route across the globe – from the Netherlands south to South Africa, eastwards to Australia and north to Indonesia. These Invisible Genres are living testament to the enduring impact of this history on contemporary life around the world and are the inspiration for this exhibition.

The exhibition includes major work by celebrated international artists - South African William Kentridge and Dutch video artist Wendelien van Oldenborgh who is representing the Netherlands at next year's Venice Biennale. Local artists Julie Dowling, Greg Pryor and Joanna Lamb will feature alongside the painter Mokoh from Indonesia and a series of rare stone sculptures by Big John Dodo - a Karadjeri elder from the Kimberleys.



Abdul-Rahman Abdullah, *Al Falaq* 2013
75x45x42cm, tinted resin, image courtesy the artist.

Cover image
William Kentridge, *Horse series (Promised Land,)* 2008,
3.8 x 4.16m, hand woven mohair tapestry, edition 3,
courtesy of the artist, Private Collection





Back page
Jacqueline Ball, *Back home, wet cheeks* 2015
inkjet print on archival rag, 79 x 54 cm. courtesy
of the artist @Curtin Gallery



Julie Dowling, *Warridah Melburra Ngupi*,
acrylic and red ochre on canvas, 150 x 120 cm.
Cruther's Collection of Womens' Art
The University of Western Australia

Wendelien van Oldenborgh, *No False Echoes*, 2008
still from video, 30', Courtesy Wilfried Lentz Rotterdam and the artist



LAWRENCE WILSON ART GALLERY

The University of Western Australia, 35 Stirling Highway, Crawley

Gallery hours: Tue – Sat 11am – 5pm

Closed public holidays, free admission

T 6488 3707

lwgallery.uwa.edu.au info@lwgallery.uwa.edu.au

BERNDT MUSEUM

MOWALJARLAI VISION AND VOICE

UNTIL 17 SEP

Honouring the life and legacy of lawman, philosopher, artist, activist, storyteller, bush professor, and statesman, David Mowaljarlai.

MIRIAM STANNAGE: SURVEY 2006 - 2016

UNTIL 24 SEP

Miriam Stannage: Survey 2006 - 2016 showcases Stannage's characteristically wry observations of life, and testifies to her ongoing experimentation and innovation across a range of media. The artist utilises everyday objects to offer a commentary on fame, and the fragile and transitory nature of our time on this planet.

SALTWATER MAPPING

8 OCT – 10 DEC

Presented by the Berndt Museum.

Exploring four centuries of mapping the Western Australian coast through cartography, songlines and stars in response to the 400th anniversary of Dutch explorer Dirk Hartog's landing in Western Australia. Saltwater Mapping aims to challenge the notion of discovery with an exploration into the way in which humanity has mapped the WA coastline

over the past four centuries. This exhibition is a survey into new ways of seeing and understanding our coastline in relation to both Australia as a nation in the 21st century and its position within Asia.

CHAR SOO

8 OCT – 10 DEC

Filming simultaneously in all four directions, Iranian-born artist Hossein Valamanesh transports the viewer into the central point, or 'Char Soo' (meaning 'four sides'), of an Iranian bazaar.

Char Soo is also a metaphor for Iran, a country that has stood at the crossroads of invasion, religious shifts and cultural interaction for centuries.

KELLY DOLEY:

THINGS LEARNT ABOUT FEMINISM.

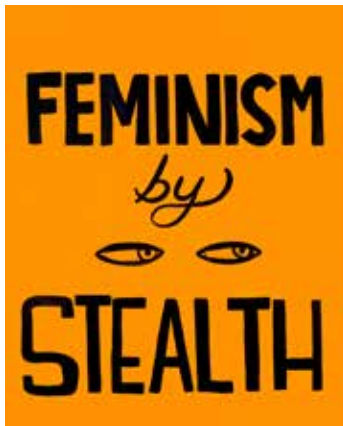
8 OCT – 10 DEC

Unapologetically brash and knowingly contradictory, this exhibition investigates the tropes and clichés of the political poster and celebrates the strength and diversity of feminism today. Presented by the UWA's Cruthers Collection of Women's Art, the nation's only public collection of art by Australian women.

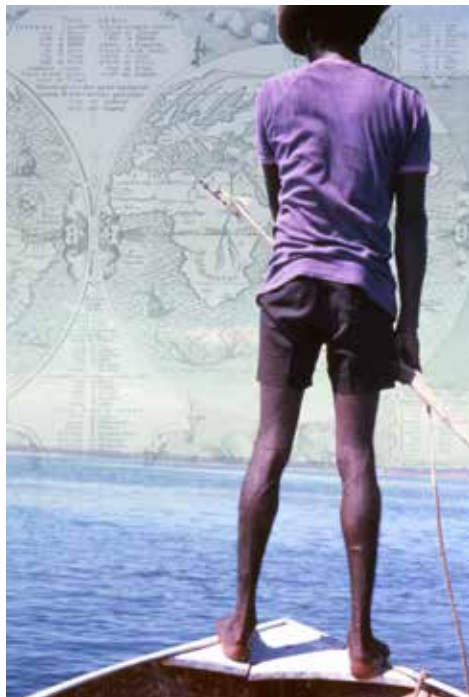
Miriam Stannage, *Museum of Natural History*, 2015
from *Security Notice* series lightjet photograph
100 x 70 cm. © Miriam Stannage



Kelly Doley, *Things Learnt About Feminism #1 - #95*
(detail), ink on 220 gsm card, 52 x 60 cm
(95 pieces) © Courtesy of the artist.



Original photo: *Phillip Ah Choo looking for turtle, One Arm Point*, 2013, Courtesy of Kim Akerman.
Secondary image: Pieter Goos, *Paskaerte Zynde t'Oosterdeel Oost Indien*, 1666. Private collection.



Hossein Valamanesh, *Char Soo*, 2014,
pre-production still, courtesy the artist and GAG Projects, Adelaide.
Photograph by M Reza Jahanpanah, © Hossein Valamanesh/Licensed by Viscopy, 2014.



ALCOA MANDURAH ART GALLERY THE MANDURAH PERFORMING ARTS CENTRE

Ormsby Terrace
Mandurah 6210 9550 3900 www.manpac.com.au
Free admission

HomeFRONT UNTIL 10 SEP

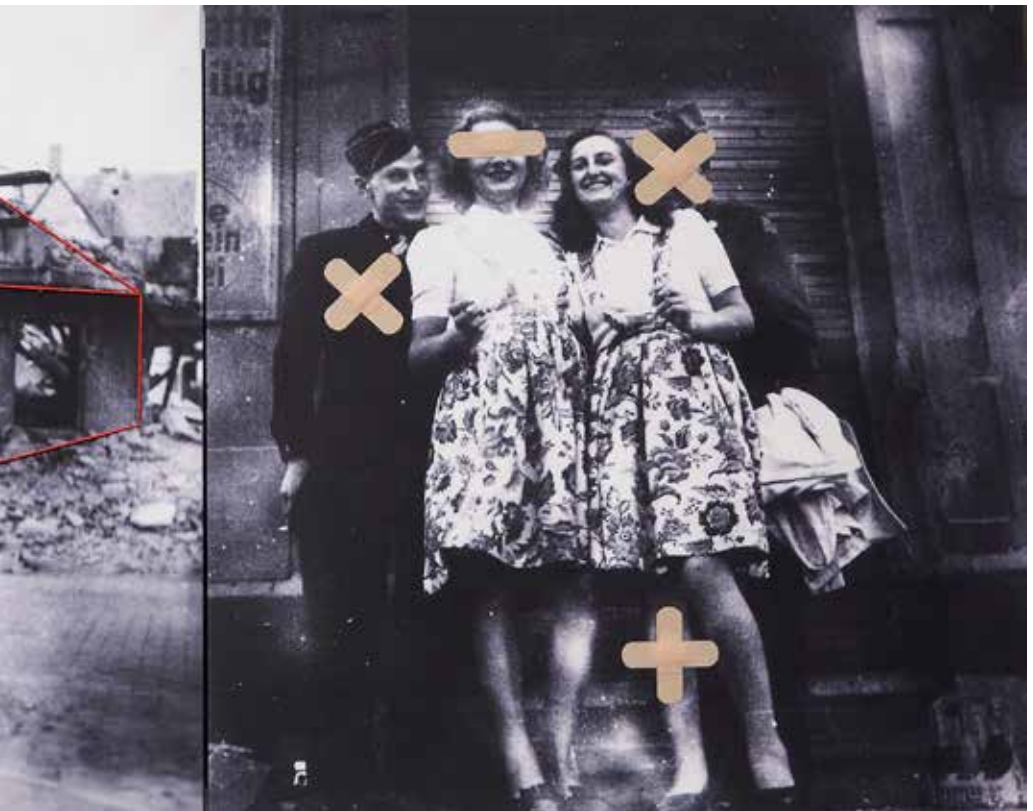
This exhibition transcends the personal and potentially critiques the national veneration of the ANZAC myth. The 16 artists in this exhibition have presented us with work that each in its own way examines that myth and pulls apart some assumptions embedded in this national day of commemorative remembrance. The centenary of ANZAC Day and Australia's involvement in WW1 is surely an opportune time to re-evaluate attitudes; person, communal and national.

Much of the work in the show critiques the 'why' in general terms of war - its horrible consequences physical and mental. It also examines and documents some of the work carried out by the home front, the internment of enemy aliens, the forgotten and undocumented war dead, the war horse and the ever-hopeful correspondence between the home-family and the warrior.

Sounds pretty grim? Well I suppose it does and for sure this exhibition's subject matter is serious. But ... the work itself I believe does transcend the grim and presents us with many very poignant, hand-crafted moments of individual thoughtfulness.



New Dressing Old Wounds (detail) by Indra Geidans, 2015. Image courtesy Bo Wong



THE MOORES BUILDING CONTEMPORARY ART GALLERY

46 Henry Street, Fremantle

Gallery hours: Mon – Sun, 10am – 4pm

Free admission, managed by Fremantle Arts Centre

T 9335 3519

www.fac.org.au/exhibitions/moores-building.aspx richiek@fremantle.wa.gov.au

FREMANTLE ARTS CENTRE COURSES

3 – 11 SEP

OPENING FRI 2 SEP 6PM

Exhibition is a showcase of painting, drawing, photography, jewellery and ceramics created by students who have participated in FAC's learning program in the past twelve months.

EARTH.WIND.WATER.

MIND WALK

17 SEP – 2 OCT

OPENING FRI 16 SEP 6PM

Earth.Wind.Water. An exhibition by Britt Mikkelsen, Vania Lawson and Andrew Cross. A mixture of sculpture and painting that are inspired by the natural environment and interpreted by each artist in their individual ways.

Mind Walk : Portrait of Fremantle is a solo exhibition by visiting artist Elyssa Sykes-Smith who will be exploring the unusual architectural and natural spaces of Fremantle with drawings, paintings and sculptural installation.

Elyssa Sykes-Smith *Stretch*

variable wood and paint, 150 x 170 x 95cm, 2016





Vania Lawson *Still Blue - Meelup*
Acrylic on canvas, 91.5 x 91.5 cm. 2016



Britt Mikkelsen *South Beach*
Acrylic, polyurethane, jarrah.
30 x 14 x 66cm. 2016

Robert Ewing *Monument to a new world order*
Coloured pencil on cotton paper, 297mm (H) X
210 mm (W), 2016

CURIOUS INTIMACIES

8 - 23 OCT

OPENING FRI 7 OCT 6PM

Curious Intimacies an exhibition of works on paper by Robert Ewing. Artwork that evokes an atmosphere of intrigue and provides a doorway to a tantalisingly familiar, yet alien place. Intimate and secluded, it is a place of contrasting visual elements, where the imagined and real are combined to create scenes that challenge notions of landscape in transition, isolated and inhabited...placed somewhere between our memory and imaginings.



PERTH INSTITUTE OF CONTEMPORARY ARTS – PICA

Perth Cultural Centre, James Street, Northbridge

Gallery hours: Tue – Sun, 10am – 5pm

Free admission

T 9228 6300

pica.org.au info@pica.org.au

THE CURTAIN BREATHED DEEPLY

JUSTENE WILLIAMS

17 SEP – 30 OCT

The Curtain Breathed Deeply presents an immersive collection of video and sculptural work by artist Justene Williams. This, Williams largest and most ambitious undertaking to date sees the artist use found objects and waste materials to create dazzling theatrical environments, seducing visitors through a variety of hypnotizing sets and 'performative' video installations.

Williams takes inspiration from many sources including memories of her father's wrecking yard, her childhood training in dance and her experiences constructing elaborate retail window displays as well as early twentieth-century avant-garde art and theatre and contemporary pop culture. Williams blends ritualistic references from Shamanism, Voodoo and Modernist primitivism with art historical giants - Picasso, Leger, Klein, Flavin and Kahlo - and a range of pop culture influences including hip-hop, Milli Vanilli and A Chorus Line.

An Artspace exhibition toured by Museums & Galleries of NSW.

Justene Williams, *The Joy of Life After Matisse/Madonna/Marcel* (detail), 2014.

Courtesy the artist and Sarah Cottier Gallery.





Gordon Bennett, *Study for Possession Island*, 1991. Oil, acrylic and gouache on illustration board, 65 x 100cm. Collection: Wavell State High School, Brisbane. Photography: John O'Brien. © The Estate of Gordon Bennett.

BE POLITE

GORDON BENNETT

17 SEP – 30 OCT

Be Polite is an exhibition of largely unseen works on paper by one of Australia's most visionary and critical artists, Gordon Bennett (1955-2014). On tour from the Institute of Modern Art in Brisbane, this curated selection of Bennett's works on paper comprises drawing, painting, watercolour, poetry, and essays from the early 1990s through to the early 2000s.

Though rarely seen in exhibition contexts, Bennett's drawing and script form the foundation of his practice. Paper is the site where imagery, words, and ideas often found their first expression before being combined into the large-scale conceptual paintings for which Bennett is known. Despite their relatively small scale, works in Be Polite embrace rich layers of Western and Australian Indigenous art history and contemporary politics, an approach Bennett played a leading role in developing throughout the 1980s and continued to explore in his successful career.

Gordon Bennett: Be Polite has been produced by the IMA, Brisbane and curated by Aileen Burns and Johan Lundh.

SPECTRUM PROJECT SPACE

Building 3.191 Edith Cowan University
2 Bradford St, Mt Lawley
Gallery hours: Tue – Fri 10am – 5 pm, Sat 12 – 5pm
T 6304 6906
ecu.edu.au/spectrum spectrum@ecu.edu.au

ESPRESSO SELF 2016

OPENING TUESDAY, 6 SEP 5.30 – 8:00PM
EXHIBITION 7 – 16 SEP

Espresso Self showcases the nexus between creative practice and research, with work by ECU staff being presented to the wider ECU community and general public. Originally conceived as a platform to encourage ECU academics to exhibit their 'other' selves, Espresso Self has evolved into a dynamic expression of what it means to engage with creativity in and beyond the research environment. The exhibition will open on 6 September at Spectrum Project Space on Mount Lawley Campus, closing with a sundowner event on 16 September. The exhibition will then relocate to Joondalup Campus Gallery from 19 September to 30 September.



DEAD CENTRE

Tony Albert, Abdul Abdullah, Olga Cironis, Barbara Cleveland Institute, Nathan Beard, Megan Cope, Liam Colgan, Thea Costantino, Léuli Eshraghi, Angela Tiatia
Curated by Anna Louise Richardson & Abdul-Rahman Abdullah

OPENING FRIDAY, 23 SEP, 6:00 – 8:00PM
EXHIBITION 24 SEP – 1 OCT

I'm not on the outside looking in, I'm not on the inside looking out, I'm in the dead fucking center, looking around.

- Kendrick Lamar

Dead Centre is a group exhibition of nine artists and artist groups whose practices draw on the physicality of the human body to explore the intersection of individuality and the broader social constructs of power as a symptom of stratified cultural capital.

This exhibition has been supported by The Australian Artists' Grant. The Australian Artists' Grant is a NAVA initiative, made possible through the generous sponsorship of Mrs Janet Holmes à Court and the support of the Visual Arts Board, Australia Council for the Arts.



WORDS BEYOND GRAMMAR

SHERIDAN COLEMAN, ALEX GRIFFIN,
KIRSTY JADE, REBECCA JENSEN,
BRONTE JONES, LOREN KRONEMEYER,
DANNI MCGRATH, M-O MAYRHOFER - OHATA,
STEVEN TAPPING, ALEX TATE

CURATED BY CLAIRE BUSHBY & SJ FINCH

OPENING THURSDAY, 13 OCT 6:00 – 8:00PM
EXHIBITION 14 – 28 OCT

"Google is the first known philosophical machine that regulates our dialogue with the world by substituting 'vague' metaphysical and ideological presuppositions with strictly formalized and universally applicable rules of access." - Boris Groys, Google: Words Beyond Grammar, DOCUMENTA (13)

Words Beyond Grammar seeks to expand beyond search engines, and to address Groys' use of deconstruction.

This project has been assisted by the Australian Government through the Australia Council, its arts funding and advisory body.

Angela Tiatia

Walking the Wall, 2014

(still image from digital moving image)

13 minutes, 4 seconds Single-channel high definition video

Courtesy of the artist and Alcaston Gallery, Narrm Melbourne

TURNER GALLERIES

470 William Street, Northbridge

Gallery hours: Tue – Sat, 11am – 5pm, and by appointment

Free admission

T 9227 1077

turnergalleries.com.au info@turnergalleries.com.au



Siné MacPherson
Parkeyerring Lake 2013
52 x 73cm, oil on canvas.

SINÉ MACPHERSON, STILL LIVES

MAIN GALLERY: 26 AUG – 1 OCT

Eminent Australian artist Siné MacPherson is showing with Turner Galleries for the first time. Her paintings feature found subjects, ready made, already made. In *Still Lives* she depicts the poignant roadside memorials found along Albany Highway, filled with white crosses and great artificial flowers.

THEO KONING, FRAGMENTS OF LANGUAGE

ENGINE ROOM 1: 26 AUG – 1 OCT

Theo Koning's exhibition of new sculpture is inspired by being at the intersection of many spoken languages in Basel 2015, and how this might translate into new visual forms.

Theo Koning *untitled 74* 2016, cloth, acrylic, wood, 9.7 x 68 x 5cm





Vivian Cooper Smith
Apparition apparatus #6 2016
 pigment pen on c-type print, 50 x 75cm.



David Rosetzky
Seth 2016
 silver gelatin, selenium toned
 photographic print on fibre-based paper, 49.5 x 60cm.

VIVIAN COOPER SMITH: APPARITION APPARATUS EXTENSION

ENGINE ROOM 2: 26 AUG – 1 OCT

Vivian Cooper Smith explores the relationship between belief systems and the natural world in this exhibition of important new photographic work.

DAVID ROSETZKY: ARTIST IN RESIDENCE EXHIBITION

MAIN GALLERY: 7 OCT – 5 NOV

This exhibition explores identity, subjectivity and relationships through photography. It will include a new series of black and white analogue photographs, as well as the artist's iconic cut-out and collaged portraits that challenge gender binaries and explore the complexities of being human.

POINT OF DIFFERENCE: DESERT TO SEA

ENGINE ROOMS 1 & 2: 7 OCT – 5 NOV

Artitja Fine Art presents an exhibition that encompasses three geographically distant regions and emphasises diverse mediums and styles. All three have one thing in common; the ancestral story lines and the artists' culture and mythology.



Susan Wanji Wanji, *Jilmara design*,
 120x180cm, ochre on linen

ARTITJA FINE ART

PO Box 406, South Fremantle
Gallery hours: by appointment
T 9336 7787
M 0418 900 954
artitja.com.au info@artitja.com.au

Specialists in Australian Aboriginal Art from remote and regional art centre communities. Our home gallery and studio is open by appointment outside of our exhibition program.



Tjungkaya Tapaya 180x100cm274-16

POINT OF DIFFERENCE

DESERT TO SEA

7 OCT – 5 NOV

This exhibition will encompass three geographically distant regions and emphasise a diversity of medium and styles. All three have one thing in common being the ancestral story lines and the artists' culture and mythology. From as far away as Pirlangimpi, in the Tiwi Islands, the Munupi artists of Melville Island with their distinctive ochre mark makings, to the bold and self assured colour explosion of the Iwantja and Ernabella arts communities in the APY lands and accompanied by internationally recognised, award winning Noongah Bush Sculptor Janine McAullay Bott from Perth, whose organic weaves will reference the work.

Artitja Fine Art Exhibiting at Turner Galleries /Engine Rooms 470 William Street, Northbridge

INDIGENART – MOSSENSON GALLERIES

115 Hay Street, Subiaco

Gallery hours: Wed – Sat, 11am – 4pm, and by appointment 0413 803 998

Closed public holidays, free admission

T 9388 2899

mossensongalleries.com.au

art@mossensongalleries.com.au



MOSSENSON GALLERIES

Mossenson Galleries is regarded as one of Australia's leading commercial galleries. Founded as 'Indigenart' in 1993 in Perth by Dr Diane Mossenson and her husband Dan, the gallery is now focused on activities in its Subiaco premises.

In establishing Indigenart, Diane Mossenson was motivated by the fact that there was no other gallery in Perth dedicated to high-quality Indigenous artworks. Mossenson took this pioneering outlook into the range and styles of artwork that she exhibited. She strove to exhibit challenging, innovative and exciting artists. Mossenson Galleries soon became defined as a trailblazing epicentre for the exciting emerging Indigenous art movement. In 2006, Mossenson Galleries expanded its interests to include non-Indigenous artists.

Artists represented by Mossenson Galleries have been included in most of the major art prizes in Australia, including the Telstra National Aboriginal and Torres Strait Islander Art Awards, The Wynne Prize, The Sulman Prize, The Blake Prize, The Arthur Guy Memorial Painting Prize, The Doug Moran National Portrait Prize and the Fletcher Jones Painting Prize.

Mossenson Galleries' innovation and trend-setting has been acknowledged by public institutions, including the National Gallery of Australia, the National Museum of Australia, the National Gallery of Victoria, the Art Gallery of South Australia, and the Art Gallery of Western Australia, which regularly source works from them. Artists from Mossenson Galleries have been included in major institutional exhibitions such as Culture Warriors: The National Triennial of Indigenous Art, (National Gallery of Australia), South By South West (Art Gallery of Western Australia), Crossing Country (Art Gallery of New South Wales) and Tarnanthi (Art Gallery of South Australia).

ARTGEO GALLERY

7 Queen Street, Busselton

Gallery hours: open daily 10am – 4pm

Free admission

T(08) 9751 4651

www.artgeo@artgeo.com.au artgeo@artgeo.com.au

CITY OF BUSSELTON ART AWARD 2016 CONTEMPORARY WESTERN AUSTRALIAN ART 16 SEP – 23 OCT

First prize comprises a \$10,000 acquisitive award plus a 5 week solo exhibition

ArtGeo Gallery is part of the City of Busselton ArtGeo Cultural Complex

Right:

Lee Harrop

Good as Gold

neon installation exhibited during Lee's solo exhibition ArtGeo Gallery



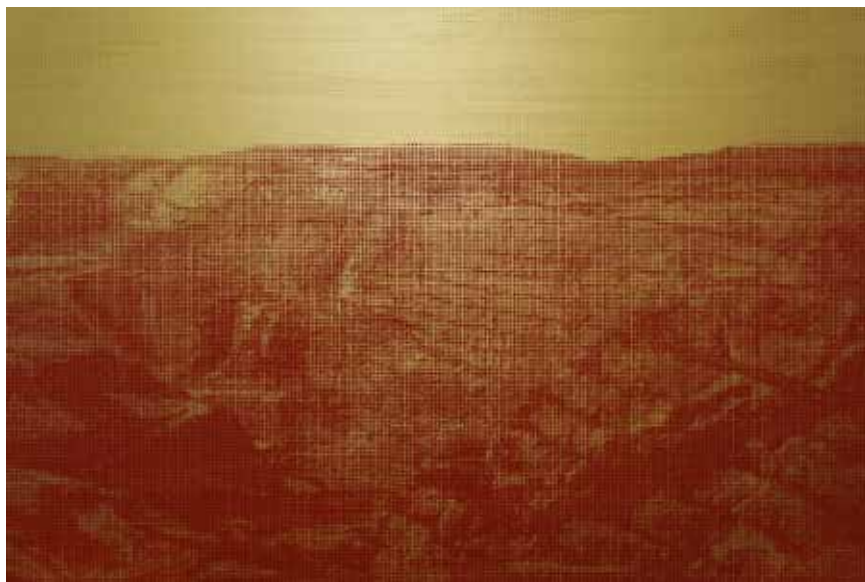
Lee Harrop

Study for the Sublime (ore mixed with terror) 2

acrylic on mdf 86 x 120cms

City of Busselton collection

winner City of Busselton Art Award 2015



MOANA PROJECT SPACE

Moana Chambers Building, first floor, 618 Hay Street Mall, Perth
Gallery hours: Mon-Fri, 7am – 4pm, Sat, 10am – 3pm, Sun 11am-4pm
Free admission
moana-ari.com info@moana-ari.com



Kate Mitchell, *Hypnotised into Being* (2016),
Digital image

UNGLAMOROUS

KATE MITCHELL / ERIC DEMETRIOU / ANNA DUNNILL / TAREE MACKENZIE

9 SEP - 1 OCT

"It's essentially just putting objects in a frame, and hanging it on a wall. And by hanging it on a wall, I mean plugging it in."

Eric Demetriou, phone conversation 11 August 2016

Unglamorous is a curated exhibition at Moana examining how the work of art works. Artists Anna Dunnill (WA), Eric Demetriou (VIC), Taree Mackenzie (VIC) and Kate Mitchell (NSW) each tackle the work of art as an honest question, showing you their working and their process - not as a sideshow, but as an integral aspect of the artwork itself.

These artists share an approach of transparency in their production. The apparatus, mechanisms and methods are not concealed under clever editing or polish, but integrated as part of the artwork. Unglamorous looks inside the making and machinery of the artwork, bringing together artworks which not just reveal, but revel in the process by which they come about.

As a provocation and response to the object-based work of art, Unglamorous looks at the process of making art; through the intimate stick and poke tattoos of Anna Dunnill's *Needlepoint Club*; Taree Mackenzie's visual adaptation of sudoku; Kate Mitchell's efforts to hypnotise herself into becoming various works and objects of art; and Eric Demetriou's audio subversion of two-dimensional art. Unglamorous is curated by Elizabeth Pedler (WA).

Moana Project Space is an artist-run initiative in the heart of the Perth CBD showcasing innovative contemporary practice on a national scale since 2012.



Anna Dunnill *Needlepoint Club*
2013-2016

NYISZTOR STUDIO

Nyisztor Studio, Melville

391 Canning Highway Melville

(Entry and parking via Stock Road)

Gallery hours: Wed – Sat 11 – 5, Sun 2 – 5

Free admission

M 0414 459 503

nyisztorstudio.com.au rnyisztor@westnet.com.au

LOUISE DICKMANN, LINDA BANAZIS, LYNNETTE VOEVODIN
UNTIL 11 SEP

PCWK8
UNTIL SUN 2 OCT
pure contemplation without knowledge - version 8
Opens 6pm Saturday 17 September

BARBIE GREENSHIELDS AND ANNA SABADINI
29 OCT – 13 NOV.



PAPER MOUNTAIN

Upstairs, 267 William St, Northbridge
Gallery hours: Tue – Sun, 9.30am – 5pm
Free admission
papermountain.org.au info@papermountain.org.au

MICHELE GRIMSTON INDEFINITE LANDSCAPE

9 - 24 SEP

Opening: Fri 9 Sep, 6pm

Artist Talk: Sat 24 Sep, 1pm

Indefinite Landscapes, a solo exhibition by Bunbury-based artist Michele Grimston.

The importance of reflective space cannot be underestimated. Places to contemplate and to open up social connections through discussion and story sharing are vital to our wellbeing both as individuals and as a society. *Indefinite Landscapes* presents a series of such “Dreamspaces”, a series of three unique havens which will reside on the gallery floor.

MONIKA LUKOWSKA AND MELANIE MCKEE TERMINUS

5 - 22 OCT

Opening: Fri 5 Oct, 6pm

A collaborative exhibition between Monika Lukowska (Poland) and Melanie McKee (Zimbabwe).

Born in opposite hemispheres and both currently living in Perth, Lukowska and McKee seek to explore how memories of a past home and distance from place of origin culminate within material culture via printmaking and multimedia practices. The exhibition takes an interdisciplinary approach to address the concerns faced by contemporary migrant artists on divergent paths; including senses of place, belonging, memory and dislocation.



Michele Grimston. *Dreamspace II - Boulder*, 2015.
Fabric, fibreglass, plastic and metal.

Monika Lukowska. *Encountering Silesia*, 2016.
Digital print 80 x 150cm



PS ART SPACE (PSAS)

22 Pakenham Street Fremantle
Gallery hours: Tues- Sat, 11am – 4pm
Free admission
T 9430 8145
psas.com.au admin@psas.com.au

SUB ROSA

TREVOR RICHARDS, HELEN SMITH

2 - 26 NOV TUE - FRI 10 - 4PM, SAT 10 - 2PM

A spatial encounter between two senior Western Australian artists. Smith and Richards respond to the theme of concealment and secrecy. In Sub Rosa the duo have elaborated site specific works drawn from their current practice.



Helen Smith, *Reunification series # 61* Photographic collage 11 x 8cm



Image courtesy of Ross Potter

WOOD

OPENING 14 OCT, 6.30PM, TUE - SAT, 10 - 4PM

WOOD is a collaborative art and culture project, which showcases the importance of nature through the talents of Fremantle based artists. Featuring large-scale graphite sketches by local artist Ross Potter, the works will portray examples of our natural world being under-appreciated or destroyed.

PERTH CENTRE FOR PHOTOGRAPHY

18 Colin Street, West Perth

(cnr Colin Grove) Car park entrance on Colin Grove

Gallery hours: Wed & Fri, 12 – 5pm, Sat 1 – 4pm. Free admission

T 9321 4457 info@pcp.org.au

IRIS AWARD EXHIBITION

2 SEP - 1 OCT

In its fourteenth year, the IRIS Award focuses on portraits that are unique, compelling and engaging whilst maintaining excellence in photography. It is an international prize recognising new and outstanding portraiture in photographic art and is open to all artists practising in the medium of photography.

PCP would like to congratulate all finalists and thank all who entered this award this year.

Matthew Abbott | Madeline Bishop | Paul Blackmore | Claire Blankendaal | Chris Bowes | Aaron Bradbrook | Shannon Calcott | Brett Canet-Gibson | Jade Clifford | Simon Deadman | Kern Hendricks | Bridget Hough-Neilson | Moon Hee Kim | Bronek Kozka | Jon Lewis | Mia Mala McDonald + Catherine Tipping | Amy Meacham | Emma Murray | DeeDee Noon | Kellie North | Isabelle Osborne | Sonja Porter | David Porteus | Marc Pricop | Heather Raadgever | Cecilia Sauri | Tristan Still | Sarah Walzer | Laurence Watts | Alex Weltlinger | Alexandra Zhidkikh

THE CITY OF PERTH PHOTOGRAPHIC COMMISSION 2015

14 OCT - 12 NOV

OPENING NIGHT : 13 OCT 2016 - 6.30 PM

Established in 2009, the City of Perth Photographic Commissions invites professionally renowned photographers to capture our city at a particular moment in time.

In order to demonstrate the various ways of viewing and interacting with Perth two commissions were established, one focusing on the architecture that forms the structure of the city, and the other examining Perth in broader terms to represent elements of our social landscape.

In 2015 local artists Graham Miller and Jacqueline Ball were selected to present Perth with work created for the City of Perth Photographic Commission. This exhibition will be featured at the Perth Centre for Photography.



© Jackson Eaton
Melfies (series view) IRIS winner 2013

SUCCESS GALLERY

2 Newman Court Fremantle

Gallery hours: Fri – Sun, 10am – 5pm, and by appointment

communications@successarts.org

www.successarts.org

3 SEP - 2 OCT

PASSING / PARADES

Exploring modalities of queer visibility in the work of contemporary visual artists. We're here, we're queer, and we'd like to say hello. Frances Barrett Justin Shoulder & Bhenji Ra, Hissy Fit, Claudia Nicholson, Elliott Bryce Foulkes, Torrie Torrie, Liam Colgan , Anna Dunnill, Anna McMahon, Salote Tawale

A GLOSSARY OF SORTS

An abbreviated retrospective of works in the innovative and intellectually driven practice of Sydney artist Benjamin Forster.

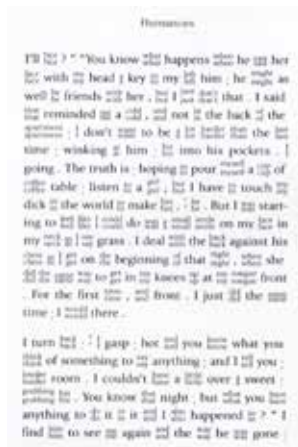


INANITION

A curated exhibition of video and sculptural art imagining the end of times. Art and Sci-Fi combine in the speculative visions of prominent international and Western Australian artists. Patrick Bernatchez, Claire Evans & K. Michael Merrell, Kelly Richardson, Erin Coates, Thea Constantino, Joshua Webb

BREATHING STATUS

An exhibition exploring intimate and precarious relationships with personal technology and homewares by Tully Arnot and Bronte Jones.



Clockwise from Top:

Frances Barrett, *My Safe Word is Performance*, 2014, 20min, performance with Ivan Crozier as part of Restaging Restaging at Alaska Projects (Sydney), Photo: Salote Tawale

Benjamin Forster, *Romances*, 2016, courtesy the artist

Kelly Richardson, *The Last Frontier*, 2013, Still, courtesy the artist

Bronte Jones, *Breathing Status*, 2016, courtesy the artist





THREE ARTISTS. ONE MEDIUM (PAPER). AN EXHIBITION OF WORKS BY THREE ARTISTS



JACKY CHENG



LEONIE OAKES



SUE CODEE

During The York Festival, Tasmanian artist Leonie Oakes will lead a one day workshop teaching booklet binding and folded paper forms with surface decoration on Saturday 10th September.

On Sunday 11th September, join Leonie in the gallery space at 11am for a demonstration of wearable art paper pattern-making.

OPEN 10AM - 4PM | WEDNESDAY - SUNDAY

10TH - 29TH SEPTEMBER

152 AVON TERRACE, YORK

2016
COMMUNITY
INVITATION
ART AWARD



City of
Joondalup



Artwork detail: 'It's not a party without the devil' by Trevor Bly and Patrick Doherty -
Overall Winner of the 2015 Community Invitation Art Award.

Sunday 16 – Saturday 29 October

Exhibition at Lakeside Joondalup Shopping City

ANDYQUILTY ANNASABADINI ANNALOUISERICHARDSON
DAVIDBROPHY EMMABUSWELL FIONAGAVINO GERA WOLTJER
LEE HARROP LYLEBRANSON MATTHEWTHORLEY PEGGYGRIFFITHS
REBECCA JENSEN SERGETAMPALINI SHANNONLYONS TIMBURNS

For further information visit joondalup.wa.gov.au
call 9400 4924 or email visualarts@joondalup.wa.gov.au

Connect with the City



BUNBURY BIENNALE 2017

Contemporary art exhibition
8 July – 10 September 2017

CALL FOR EXPRESSIONS OF INTEREST

Closing date Friday 25 November 2016

Contemporary West Australian artists working in a broad range of all art forms (including 2- & 3- dimensional, multi/new media and installation art) are encouraged to submit their expressions of interest for selection.

Entry forms available at www.brag.org.au

For all enquiries contact the Curator
(08 9792 7143 / clunel@bunbury.wa.gov.au)



BUNBURY
REGIONAL ART GALLERIES



Jacqueline Ball *Back home, wet cheeks* 2015 inkjet print on archival rag, 79 x 54 cm. courtesy of the artist @Curtin Gallery