

CIR- CUIT

OCT –
DEC 2011

MEMBERS OF THE ASSOCIATION OF WESTERN AUSTRALIAN COMMERCIAL ART GALLERIES (AWACAG)

- 2 emerge ART SPACE
- 4 GALERIE DUSSELDORF
- 6 GALLERY EAST
- 8 GOMBOC GALLERY SCULPTURE PARK
- 10 GREENHILL GALLERIES
- 12 HOLMES a COURT GALLERY
- 14 INDIGENART MOSSENSON GALLERIES
- 16 KINGFISHER GALLERY
- 18 LISTER GALLERY
- 20 PERTH GALLERIES
- 22 SEVA FRANGOS ART

PUBLIC ART VENUES

- 24 ART GALLERY OF WESTERN AUSTRALIA
- 26 BUNBURY REGIONAL ART GALLERIES
- 28 FORM GALLERY
- 30 FREMANTLE ARTS CENTRE
- 32 GALLERY CENTRAL
- 34 HEATHCOTE MUSEUM AND GALLERY
- 36 JOHN CURTIN GALLERY
- 38 LAWRENCE WILSON ART GALLERY
- 40 PERTH INSTITUTE OF CONTEMPORARY ARTS
- 42 PRISON GALLERY
- 44 SPECTRUM PROJECT SPACE
- 46 THE MOORES BUILDING CONTEMPORARY ART GALLERY
- 65 MAP

emerge ART SPACE

676A Beaufort Street, Mount Lawley
 Gallery hours: Wed – Sat 11am – 4pm, and by Appointment
 Closed School and Public Holidays, Free Admission
 T 9271 6459
 emerge-art.com.au admin@emerge-art.com.au



BEN SHERAR IF NOT FOR THE DAWN

19 OCTOBER – 4 NOVEMBER

Ben Sherar's second solo exhibition at emerge continues his moody and evocative oil paintings examining the Perth urban inner-city nightscape and the shadowy ambiguity of alleyways, car parks and the concrete underbelly of the city after dark. This is another powerful show with Ben's signature intrinsic light permeating and illuminating these new works.

SHARON DAWES CELESTIAL ANIMAL

9 NOVEMBER – 2 DECEMBER

CELESTIAL ANIMAL will be the fourth solo exhibition by Sharon Dawes, whose beautifully rendered paintings of animals continue to be highly sought after. *Celestial Animal* explores the systems ancient man used to understand and recognise the night sky. Many images of animals were imprinted onto the star patterns and these formed the basis for the figures of myth, as well as a means of finding a way about the sky and charting the movement of astrological bodies.

The subject has fascinated Dawes for a long time, as she has an avid interest in animals and astrology and in particular star signs. The animals are rendered in what Dawes describes as 'paint specificity'; where paint is used in such a way that it describes something of the animal, beyond its superficial appearance. This technique of painting has won over many people in the genre of animal painting so do get in early to secure one of these mesmerising and covetable new paintings!

DIRECTORS' CUT CHRISTMAS EXHIBITION

6 DECEMBER – 16 DECEMBER

Just in time for Christmas this will be an eclectic and engaging exhibition of affordable paintings, sculpture and jewellery by emerge ART SPACE's diverse range of artists. Come join with us to celebrate another year of exceptional art at emerge and pick up something wonderful by our talented stable of artists.

▼ Ben Sherar, *If not for the dawn* 2011
 oil on hemp, 62.5 x 45cm
 Courtesy of the artist

▲ Sharon Dawes, *Perseus* 2010
 oil on canvas, 25 x 25cm
 Courtesy of the artist



GALERIE DÜSSELDORF

35th Year Anniversary

9 Glyde Street, Mosman Park

Gallery hours Wed – Fri, 11am – 5pm, Sun, 2 – 5pm, and by Appointment

Closed Public Holidays, Free Admission

T 9384 0890

galeriedusseldorf.com.au gd@galeriedusseldorf.com.au

BRENDAN VAN HEK

AS IF FROM A DISTANCE I COULD ALREADY SEE MYSELF

16 OCTOBER - 13 NOVEMBER

In this exhibition of new works, Brendan Van Hek produces a series of two-dimensional works in neon, alongside a number of configurations of oval mirrors and prints on paper.

The use of these materials continues on from works produced in recent years that investigate the potential of neon and mirror.

Influenced by popular culture, and the diverse, conflicting and varied sources that affect all cultural producers today, the work emerges from elaborate narratives, located in personal history, fictions and social politics. In particular this recent work takes the maze or labyrinth as a starting point to consider the idea of direction, destiny, fortune and what comes together to shape the view of one's future.

MARK PARFITT

ANYDAY NOW

27 NOVEMBER - 23 DECEMBER 2011

Preparing for the worst usually brings out your best. Mark Parfitt in his exhibition *Anyday Now*, tells the stories along the way of getting ready, conducting oneself and spreading the word to counter any kind of worry.

Coming from a simple desire to make an ordinary life more celebratory, Parfitt journals his investigations of growing barley, developing great abs, and finding the overland route across the promised land of Australia. Using drawing, diagrams and photography combined as some kind of misguided scrapbooking, Parfitt elevates the humble visual diary to unforeseeable art-form.

Anyday Now is an account of living a good life, learning through experience and preparing for any trial in the face of a mundane life.

This solo exhibition has been made possible through the Galerie Düsseldorf, Curtin University Postgraduate Scholarship and the All Art Forms Grant from the Department of Culture and the Arts WA.



▲ Mark Parfitt, *Composite of drawings, photographs and notations* 2010-11
Courtesy of the artist

◀ Brendan Van Hek, *Maze Challenge* 2011
(work in progress)
Courtesy of the artist



GALLERY EAST

94 Stirling Highway, North Fremantle
Gallery hours: Tue – Sat, 11am – 5pm, Sun 2 – 5pm
Closed Public Holidays, Free Admission
T 9336 6231
galleryeast.com.au admin@galleryeast.com.au



PERSONAL SPACE: DEFINED; JEWELLERY BY BRENDA RIDGEWELL

23 SEPTEMBER – 16 OCTOBER

The work of Brenda Ridgewell, the Director of Jewellery and 3D Design at Curtin University, is developed through a system of units constructed in varying manners to develop sculptural forms for the body. Repetitive elements are utilized as a constant reminder of the repetition within our lives and bodies. The exhibition showcases body pieces of outstanding elegance and beauty, using precious and semi precious materials to reflect the tenacity and preciousness of life itself

- ▲ Brenda Ridgewell, *Defined Space* 2011
sterling silver, 5 x 5 x 2.5 cm
Courtesy of the artist
- ◀ Peter Tilley, *The World Beneath* 2011
painted wood, bird bone, 29.5 x 13.5 x 13.5 cm
Courtesy of the artist
- ▼ Shannon Lyons: *Installation Study I* 2011
unique state digital print, dimensions variable
Courtesy of the artist

JOURNEY THROUGH MEMOIRS SCULPTURES BY PETER TILLEY

21 OCTOBER – 13 NOVEMBER

A regular and popular exhibitor at Sculpture by the Sea, in Cottesloe, Bondi and Denmark, Peter Tilley's work seeks meaning and inspiration in everyday objects; through their material form and history. As such they are a record of time, place and circumstance and reflect the rituals of life.



INSTALL: SHANNON LYONS

21 OCTOBER – 13 NOVEMBER

Reflecting her studies of gallery space, as both the content and context for work, the exhibition includes representations/fabrications of installation 'drawings' from previous group exhibitions that she has been in. Taking the form of wall based/leaning panels, these are, in fact, meticulously constructed sections of "walls" from other galleries.

THE GREAT LITTLE CHRISTMAS SHOW

18 NOVEMBER – 18 DECEMBER

Paintings, prints, sculptures, ceramics, jewellery and icons in miniature for the ideal unique seasonal present, created by Gallery East's artists and sourced from around the world and from down the centuries..

The Gallery re-opens on Sunday 15 January 2012 with an exhibition of sculptural work by Christine Atkins.



GOMBOC GALLERY SCULPTURE PARK

James Road, Middle Swan
 Gallery hours: Wed – Sun, 10am – 5pm
 Free Admission
 T 9274 3996
gomboc-gallery.com.au rm@gomboc-gallery.com.au



JULIET STONE MUSE

UNTIL 30 OCTOBER

An acknowledgement of place, it's vastness and sense of natural phenomena.

SPECIAL PREVIEW

23 OCTOBER

Special preview of the WIRRIN, bronze sculpture designed by Senior Nyungar Artist Tjyllyungoo and realised by R.M. (Ron) Gomboc as a maquette for a 5 metre sculpture to memorialise the victims of the Pinjarra Massacre.

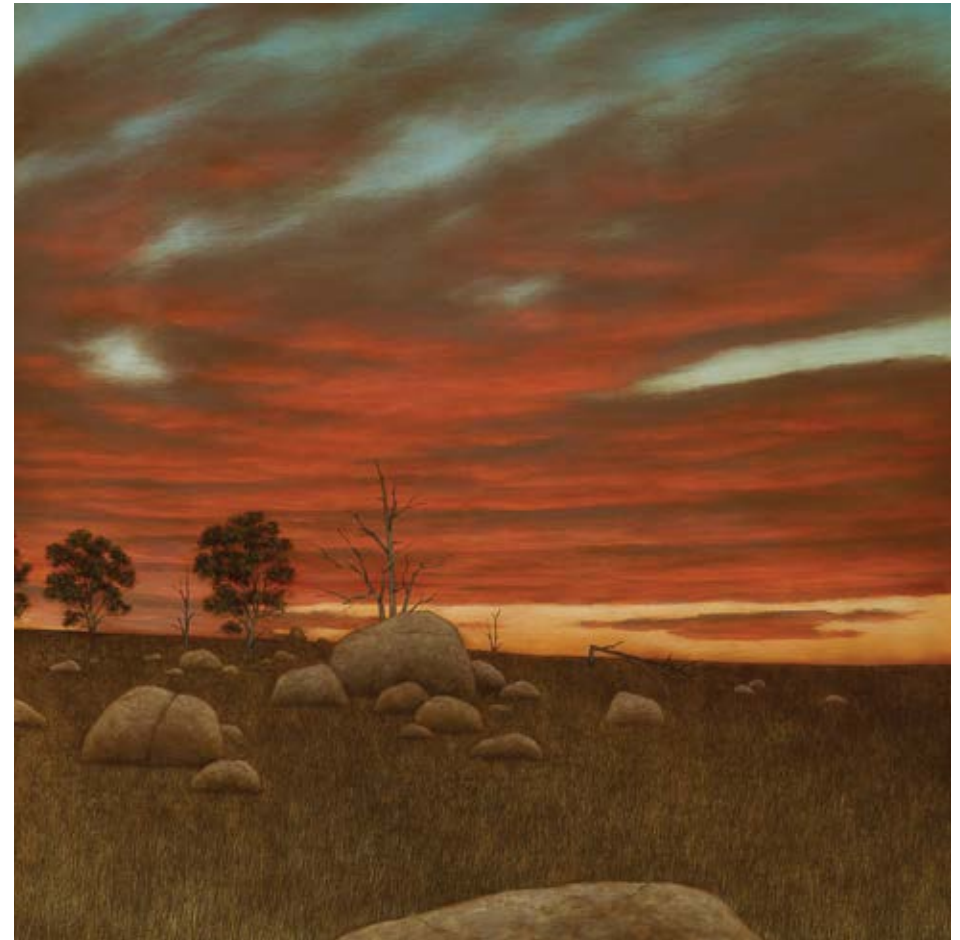
**WORKS BY NORMA MACDONALD,
 MARGARET WOODWARD,
 WENDY STAVRIANOS, BJORN DOLVA,
 CRAIG GOUGH, DEAN BOWEN,
 IAN R. HILL, MARY KNOTT,
 BRIAN RICHARD TAYLOR, JULIET STONE,
 JON DENARO, ALBIE HERBERT,
 R.M. GOMBOC AND JEAN-PIERRE RIVES
 NOVEMBER/DECEMBER**

In conjunction with advertised exhibitions, Gomboc Gallery has an extensive gallery space exhibiting paintings and sculptures by both established and emerging artists.

- ▲ Juliet Stone, *Idyll* 2011
 mixed media, 70 x 60 cm
 Courtesy of the artist
- Tjyllyungoo, *Wirrin (Spirit)* 2011
 bronze maquette, height: 50 cm, limited edition 10
 Courtesy of the artist

GREENHILL GALLERIES

6 Guger Street, Claremont
 Gallery hours: Tue – Fri, 10am – 5pm, Sat 10am – 4pm
 Closed Sunday & Monday & Public Holidays, Free Admission
 T 9383 4433
greenhillgalleries.com info@greenhillgalleries.com



- ▲ Jason Benjamin, *I've Seen Them Come and Go* 2011
 Oil on linen, 120 x 120 cm
 Image courtesy of the artist
- ▼ Angus McDonald, *Flowers and Heels* 2011
 Oil on canvas, 60 x 75 cm
 Image courtesy of the artist



HOLMES A COURT GALLERY AT VASSE FELIX

Vasse Felix, Cnr Tom Cullity Dr & Caves Rd, Cowaramup
 Gallery hours: Mon – Sun, 10am – 5pm
 Closed Public Holidays, Free Admission
 T 6217 2640
holmesacourtgallery.com.au hacgallery@heytesbury.com.au

WILDFLOWER BOUQUETS FROM THE JANET HOLMES A COURT COLLECTION

HILDEGARDE BASSETT, M.E.(MAY)CREETH,
 PENNY LEECH, CLIFFORD POSSUM,
 CLIFTON PUGH, MARGARET PRESTON,
 DAVID ROSS, ELLIS ROWAN,
 LESLEY VAN DER SLUYS, CHRISTINE WEST,
 UTOPIA ARTISTS

29 SEPTEMBER 2011- 29 JANUARY 2012

Featuring selections from various strands of the botanical works in the collection and including an installation of the very contemporary wildflower work of artist **EVA FERNANDEZ**.

WA ARTISTS SHOWCASE HOME GROWN

30 SEPTEMBER – 15 OCTOBER

Greenhill Galleries is pleased to present an exciting exhibition of new works from a selection of the gallery's Western Australian artists. Putting the spotlight on locally created artworks, *Home Grown* is a rare and unique opportunity that affords both art lovers and collectors a chance to view the diverse styles and artistic visions that are a product of Western Australia. The exhibition features work from highly celebrated artists Crispin Akerman, Shaun Atkinson, Madeleine Clear, Nigel Hewitt, Robert Juniper, Alan Marshall and Leon Pericles.

JASON BENJAMIN THE WAITING GARDEN

21 OCTOBER – 5 NOVEMBER

Returning to Western Australia with another keenly anticipated show, Jason Benjamin's *The Waiting Garden* uses his experiences and memories of the Monaro Region in Southern New South Wales to create works that engage with emotion and mindscapes, as opposed to geography and landscapes. Seeking to explore "a place filled with everything and nothing, everyone and no one", Benjamin's paintings

utilise the backdrop of nature to tap into innate human expressions and desires. Having exhibited in both Australia and overseas, Benjamin is represented in numerous public and private collections. He has also been the recipient of many prestigious awards, as well as being a finalist in the Archibald Prize.

ANGUS MCDONALD RECENT PAINTINGS AND DRAWINGS

18 NOVEMBER – 3 DECEMBER

In recent years Angus McDonald has left a mark on the Australia art scene as a highly sought after and collectable artist. Having exhibited extensively both nationally and internationally, Greenhill Galleries is to host McDonald's first solo exhibition in Western Australia. Best known for his sublimely rendered still life paintings, *Recent Paintings and Drawings* showcases his sensual and detailed portraits of everyday objects, as well as works featuring the graceful bovines that have also become a trademark of his style. Both his still life works and bovine subjects bring together his interest in capturing intensities of light and shade, ultimately searching for the beauty distilled in fleeting moments.

► Clifton Pugh, *Purple Tassels, Milk Bush, Common Donkey Orchid* 1982
 oil on hardboard, 50.5 x 60 cm
 Copyright Dunmoochin Foundation

INDIGENART – MOSSENSON GALLERIES

115 Hay Street, Subiaco

Gallery hours: Mon – Fri, 10am – 5pm, Sat 11am – 4pm

Closed Public Holidays, Free Admission

T 9388 2899

mossensongalleries.com.au art@mossensongalleries.com.au



COL JORDAN

A PLAY ON WHITE

12 OCTOBER – 5 NOVEMBER

Following the success of his survey exhibition at Wollongong City Gallery, Mossenson galleries presents Col Jordan's exhibition *A Play on White*. It will feature a selection from Jordan's oeuvre including his *Mosaic* series. In keeping with his previous exhibitions, these works are a celebration of optically charged colour presented as visual paradox. They ask questions for which there are no simple answers.

KAPI PULKA (BIG RAIN)

ARTISTS OF IWANTJA

15 NOVEMBER – 10 DECEMBER

In the paintings of Kapi Pulka (Big Rain) we see inspirational works supporting the rise of an exciting new branch to the art movement out of the Anangu Pitjantjatjara Yankunytjatjara (APY) lands of South Australia. With a community of around 300 people, Iwantja is nurturing an artistic renaissance through the endeavours of its art's centre Iwantja Arts. Water is the underlying theme on which these four artists base their work. Each artist maps out totemic sites that are not only significant to their Dreaming, but also to their rituals of collecting bush foods and punu (wood) for their carvings. The exhibition will feature works by Alec Baker, Peter Mungkuri, Whiskey Tjukangku and Tiger Yaltangki.



▲▲ Tiger Yaltangki, *Apu Hills* 2011
acrylic on linen, 121 x 101 cm
Courtesy of the artist

▲ Julie Dowling, *The King* 2010
oil on canvas, 91 x 76 cm
Courtesy of the artist

DIRECTORS CHOICE

13 – 23 DECEMBER

This month the gallery will present a selection of important works from represented artists and art communities for the Christmas period.



▲ Col Jordan, *Mosaic 4 – Starring the Ellipse* 2010
acrylic on cotton duck, 162 x 142 cm

KINGFISHER GALLERY

49 Colin Street, West Perth (cnr Colin & Richardson St, entry off Richardson St)
Gallery hours: Wed – Fri 11am – 4pm, Sun 1 – 4pm, or by Appointment
Closed Public Holidays, Free Admission
T 9486 9822
kingfishergallery.com.au jan@kingfishergallery.com.au



CELINE DONEGAN

14 SEPTEMBER – 9 OCTOBER

Celine Donegan is an expressionist style painter, working in oils. Her paintings have been exhibited in Australian galleries since 2002 and are in collections in Australia, England, France, Germany, and Croatia. This is her first exhibition in Western Australia

JEANNETTE DYSON

12 OCTOBER – 6 NOVEMBER

Jeannette Dyson is a well established and winner of many art awards in Western Australia. Her work is held in public and private collections in Australia and overseas. She currently works in an impressionistic style, her work reflecting her love of the Western Australian landscape.



JOANNE DUFFY

9 NOVEMBER – 11 DECEMBER

Joanne Duffy is an emerging artist working predominantly in acrylic on canvas. She draws inspiration from the natural environment seeking to achieve an abstraction of how we relate to a sense of place, time and emotion.

▲▲ Celine Donegan, *Gum Nut Flowers* 2011
oil on canvas, 100 x 140 cm
Courtesy of the artist

▲ Jeannette Dyson, *Fired Earth* 2011
acrylic, ochre, gold dust, 118 x 114 cm
Courtesy of the artist

► Joanne Duffy *Cantos* 2011
acrylic on canvas, 100 x 150 cm
Courtesy of the artist



LISTER GALLERY

316 Rokeby Road, Subiaco
Gallery hours: Mon – Fri, 10am – 5pm, Sat 10am – 1pm
Closed Public Holidays, Free Admission
T 9382 8188
listergallery.com.au admin@listergallery.com.au

Lister Gallery exhibits and deals in leading modern and contemporary art by major Australian artists. The gallery represents artists including Andrew Browne, Peter D Cole, John Firth-Smith, Amanda Marburg, Brent Harris, Dale Hickey, Robert Hunter, Robert Jacks, Tim Johnson, Tim McMonagle, Gregory Pryor & David Wadelton.

A selection of important Australian art from the 50's to the present day is held in the stockroom and is available for viewing on request. Offering a high degree of confidentiality and an unconditional guarantee of authenticity, Lister Gallery also provides valuations for market appraisals and insurance and expert advice on the formation, management, valuation and conservation of private and corporate collections.

► Tim McMonagle, *Bison* 2011
oil on linen, 92 x 92 cm
Courtesy of the artist



PERTH GALLERIES

92 Stirling Highway, North Fremantle
 Gallery hours: Tue – Fri, 10am – 5pm, Sat 11am – 5pm, Sun 2pm – 5pm
 Closed Public Holidays, Free Admission
 T 9433 4414
 perthgalleries.com.au admin@perthgalleries.com.au
 Member of Australian Commercial Galleries Association



BELA KOTAI RITORNELLO

21 OCTOBER – 13 NOVEMBER

At first glance, linking ceramics and classical music seems an odd combination, an internal contradiction like lead balloon. Weighty reality with the abstract.

That combinations of form and surface can have an emotional effect on a viewer is well known and this exhibition forms part of a return to a wider empirical investigation to find and systematise Kotai's understanding of the causes and triggers of this effect.

Intrigued by the ability of music, especially classical music, to access the deepest expressive content with the power that it does, Kotai turned to musicology, that deep well of formalised information about artistic expression built by many generations of musicians and composers. As a hitch-hiker's guide, he has examined the sequencing of music structures of the Baroque,

Classical, Romantic and Modern eras and selectively interpreted them into frameworks for building multi-piece ceramic pieces that embrace time as well as the other dimensions. An orchestration that determines, not only the form and surface of the parts, but also the relative size, shape and space between them, creating a tempo to the viewer's experience of the pieces. This exhibition is a summary of the intensive developmental work that began with a ten week residency at the Anderson Ranch in Colorado at the beginning of 2011 and is supported by Creative Development Fellowship.

▲ Bela Kotai, *Untitled* 2011
 vapor glazed stoneware
 Image courtesy of the artist and Perth Galleries

► Holly Grace, *Lybster* 2011
 Total dimensions 48 x 40 x 40cm
 Image courtesy of the artist and Perth Galleries



HOLLY GRACE CROSSING

18 NOVEMBER – 11 DECEMBER

Travel, for Holly Grace, has been a pathway to traverse a larger path. The myriad of trips from Australia to Northern Europe to learn her craft have been instrumental in her understanding of glass as a material and in forming her aesthetic.

Crossing is a traverse of experiences, exploring inspirations that come from the diverse landscapes and cultures that one experiences

when travelling. It is an exploration of the landscape, understanding the subtle differences that are unique to both and how they can be interpreted in glass.

By interpreting these landscapes across a variety of forms and surfaces using photographic imagery Grace aims to create a translation that is both personal and unique.

SEVA FRANGOS ART INDIGENOUS AND CONTEMPORARY

271 Rokeby Road, Subiaco
Gallery hours: Tue – Sat, 11am – 5pm, and by Appointment
Closed Public Holidays, Free Admission
T 9380 9938
sevafrangosart.com seva@sevafrangosart.com



PEGGY GRIFFITHS & MINNIE LUMAI

OPENING 18 OCTOBER

Presented in association with Waringarri Aboriginal Arts, Kununurra, East Kimberley and celebrating CHOGM 2011

Both of these leading artists from the Kimberley paint with traditional natural ochres and pigments and execute artworks with supreme confidence. They share a gift of blending ochres to render an exceptional and varied array of subtle colours, producing artworks that are immediately seductive and uplifting.

MALALUBA GUMANA

OPENING 12 NOVEMBER

Presented in association with Buku-Larrngay Mulka, Yirrkala Eastern Arnhem Land

Maluba Gumana is a very fine exponent of "marwatthe" - the cross hatching technique using a fine 'hair brush'. She paints her mother's Gálpu clan designs of the waterlily and rainbow serpent. This exhibition showcases her beautiful barks and hollow logs. Artworks can be previewed at the gallery from October.

- ▲ Peggy Griffiths, *Jinamoom* 2011
natural ochre on canvas, 80 x 60 cm
- Malaluba Gumana, *Dhatam* 2011
natural ochre on bark, 144 x 59 cm



ART GALLERY OF WESTERN AUSTRALIA

Perth Cultural Centre, James Street Mall, Perth
 Gallery Exhibitions and Gallery Shop hours: Wed – Mon, 10am – 5pm, Closed Tuesdays
 Free Admission (An entry charge may apply for special exhibitions)
 Gallery Cafe hours 8am – 5pm
 Information Line T 9492 6622
artgallery.wa.gov.au



PRINCELY TREASURES: EUROPEAN MASTERPIECES 1600 – 1800 FROM THE VICTORIA AND ALBERT MUSEUM

OPENS SATURDAY 24 SEPTEMBER

Admission fees apply

The Victoria and Albert Museum, London has one of the greatest collections of European decorative art of the 17th and 18th centuries, from the miniature to the monumental. Over ninety masterpieces from these magnificent collections have been selected for this exhibition, including painting and sculpture, ceramics and glass, metalwork and furniture, textiles and dress, prints and drawings.

The exhibition presents a series of themes encapsulating important aspects of courtly life in Europe. It begins with an opening section looking at power and patronage in Europe between 1600 and 1800, presenting key figures from European courts who were great patrons of the arts. The following sections focus on four different aspects of courtly life: the importance of war; the role of religion; the peaceful arts of the domestic interior and the magnificence of personal adornment.

For further information on talks and events visit greatcollections.com.au



WESTERN AUSTRALIAN INDIGENOUS ART AWARDS 2011

OPENS SATURDAY 24 SEPTEMBER

The *Western Australian Indigenous Art Awards*, the richest Indigenous arts prize in the country, is a national award founded in 2008 to celebrate the breadth, diversity and excellence of art from all corners of Indigenous Australia.

The awards acknowledge the significant and ongoing contribution Aboriginal and Torres Strait Islander artists make to Australian art, culture and society.

These national awards, now in their fourth year, are open to all adult Aboriginal and Torres Strait Islander artists currently living in Australia, working in any theme or media, including (but not restricted to) painting on bark, canvas and paper, prints, sculpture, fibre art, ceramics, glass, photography, and digital media.

- ▲▲ Bodice ornament, Spain, about 1700
 Diamonds set in gold scrolling openwork
 V&A: 320-1870
 © Victoria and Albert Museum / V&A Images
- *Sack-back gown*
 England, 1760–65
 Silk, with linen lining
 V&A: T.426&A-1990
 ©Victoria and Albert Museum / V&A Images
- ▲ Jan Billycan, *Kirriwirri* 2011
 synthetic polymer paint on linen, 120.0 x 90.0 cm
 Artwork courtesy of the artist and Short St Gallery,
 Broome, Western Australia
 Image © Jan Billycan, courtesy of Short St Gallery,
 Broome, Western Australia



BUNBURY REGIONAL ART GALLERIES

64 Wittenoom Street, Bunbury
 Gallery hours: 10am – 4pm daily, Free Admission
 T 9271 8226
 brag.org.au mail@brag.org.au



JIIYOUNG CHUNG AND HELEN O'HARE FIBRES WEST TRIENNIAL EXHIBITION

24 SEPTEMBER – 13 NOVEMBER

Being the sole venue in Australia, the Bunbury Regional Art Galleries are proud to host two very diverse international textile artists in *Fibres West Triennial Exhibition*. Korean Joomchi artist Jiyoung Chung, and Irish Textile artist Helen O'Hare will present two separate bodies of contemporary works drawing from their own varied environments, cultures, and heritage.

SIDNEY NOLAN THE GALLIPOLI SERIES

12 NOVEMBER 2011 – 22 JANUARY 2012

Sidney Nolan: the Gallipoli series showcases a selection of these works, which constitute both a personal and public lament, commemorating not just the death of Nolan's brother but a campaign that had cost so many Australian lives. The series was inspired not only by the Gallipoli campaign but also the myths and legends of the Trojan Wars and how Australian history and identity are perceived. The exhibition offers a rare opportunity for visitors to experience these striking and iconic works.

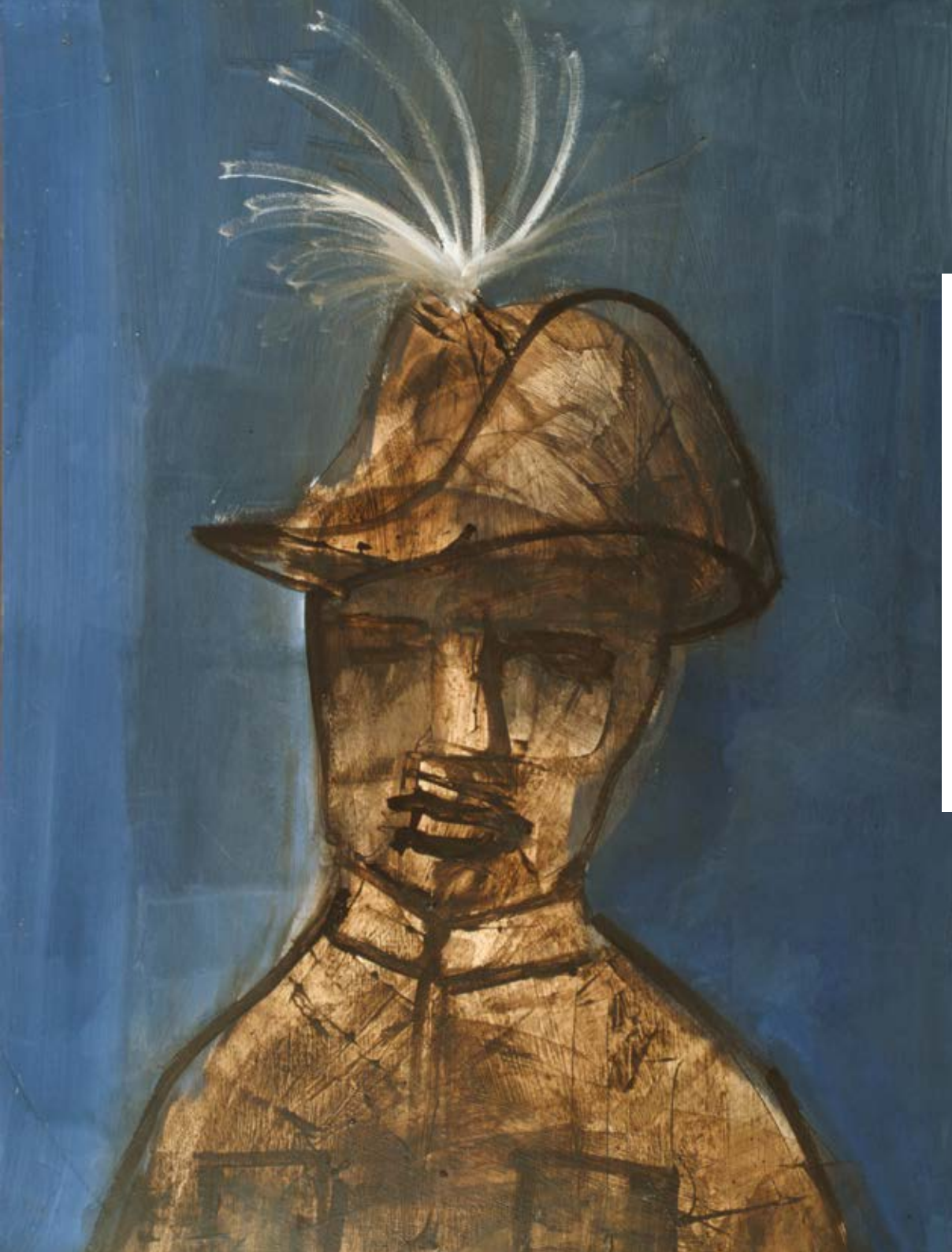


TANIA FERRIER THE QUOD PROJECT

5 NOVEMBER – 4 DECEMBER

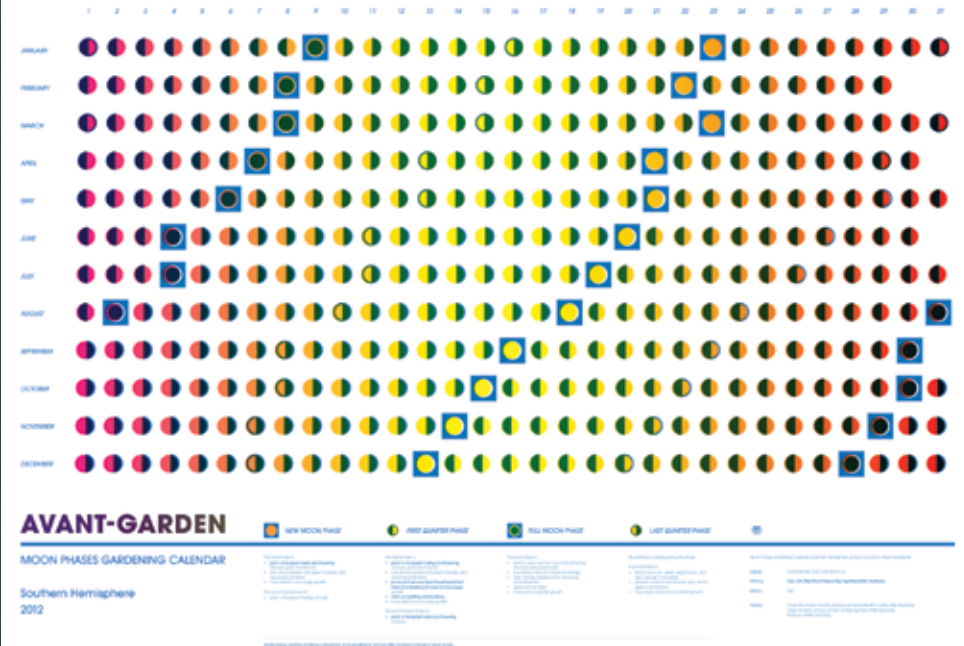
The Quod Project is a multidisciplinary art exhibition by Tania Ferrier about a building called the Quod which is now part of a tourist resort on Rottnest Island. It was built by Aboriginal prisoners. Over 3,600 Aboriginal men from all over Western Australia were incarcerated there between 1864 and 1903. Through the use of a mirror frame and incorporating Ferrier's film industry background in set design, she presents *A Room with Two Views*. Friends, family, and Aboriginal elders of Wadjemup/Rottnest Island pose for photographs done in collaboration with photographer, James Kerr. These images represent the past and present incarnations of the same space, cell, and room. The cell installation, based on research of the appearance of a Quod cell around 1900, is also on display and offers the viewer a glimpse into the colonial penal colony history of Rottnest Island.

- ▶ Helen O'Hare, *Detail 2008*
felt, print, hand stitch
Courtesy of the artist
- ▶ Sidney Nolan, *Kenneth 1958*
Polyvinyl acetate on hardboard
Image courtesy of the Australian War Memorial
- ▲ Tania Ferrier, James Kerr, Glen Stasiuk, *Wadjemup 2011*
digital print, 90 x 60 cm
Courtesy of the artist



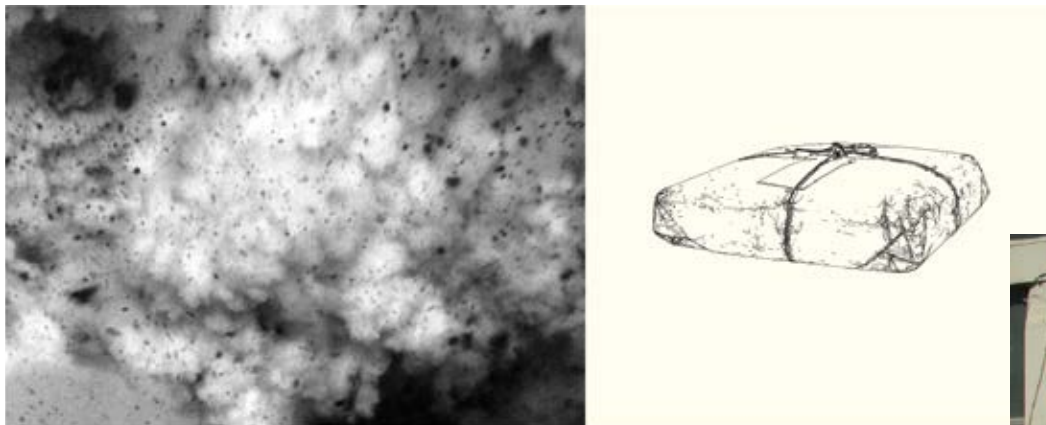
FREMANTLE ARTS CENTRE

1 Finnerty Street, Fremantle
Open 7 days, 10am – 5pm, Free Entry
T 9432 9555
fac.org.au fac@fremantle.wa.gov.au



▲ Daniel Bourke and Clare Wohlneck, *Moon Phases Gardening Calendar (Southern Hemisphere, 2012)* 2011
produced for *Avant-Garden #1*
Courtesy and © the artists

▼ Peter Burgess, *Modern Equivalence #28* 2008-2011
Inkjet Print (Ultrachrome inks on Hahnemuhle German Etch, 310 gsm), AP 1/2, 112 x 228 cm
Courtesy and © the artist



FREMANTLE ARTS CENTRE PRINT AWARD 2011 SUPPORTED BY LITTLE CREATURES BREWING

24 SEPTEMBER – 20 NOVEMBER

The 36th annual *Fremantle Arts Centre Print Award* exhibition presents a compelling selection of contemporary Australian printmaking. This year's exhibition is a rigorously refined selection of intricate works that push technical skills and examine the history of print, while simultaneously looking at its future role in all media. The winners of the major prizes will be announced on opening night, Friday 23 September at 6:30pm.

A free Printmaking and Independent Publishing Forum will be held on Saturday 5 November from 1–4pm.

DANIEL BOURKE AND CLARE WOHLNICK WITH BIG FAG PRESS AVANT-GARDEN

24 SEPTEMBER – 20 NOVEMBER

Daniel Bourke (WA) and Clare Wohlmann (WA) launch the inaugural issue of *Avant-Garden*, an irregular journal published by their printing studio Benchpress. Concerned with representations of nature in contemporary art, *Avant-Garden* features new interviews, essays, articles and projects from ten Australian and international artists. *Avant-Garden* is displayed in a custom designed reading room, alongside a lithographic print developed during their residency with Sydney collective Big Fag Press.

MARK HOWLETT FOUNDATION MHF20

26 NOVEMBER – 22 JANUARY

2011 marks the 20th anniversary and final year of the Mark Howlett Foundation (MHF) a subscriber based philanthropic group which each year has selected a mid-career artist to support. *MHF20*, the group's final exhibition, will showcase twelve of its participant artists with new work specially commissioned for this celebration. Curated by Andrew Gaynor, *MHF20* includes painting, sculpture and ceramics.

MHF20 includes a limited edition set of prints titled 'The Sportsman's Suite' (a wry nod to the memory of Mark Howlett) and a book to commemorate MHF's history written by Gaynor and Victoria Laurie. MHF has made a major contribution to the on-going sustainability of the arts community in WA. Whilst *MHF20* marks the end of one era, this extensive exhibition will bear testimony to what may be accomplished by any community group when motivated by generosity, energy and vision.

FORM GALLERY

357 Murray Street, Perth
Gallery hours: Mon – Fri, 9am – 5pm
Free Admission
T 9226 2799
form.net.au mail@form.net.au



ROA

22 OCTOBER 2011 – 13 JANUARY 2012

FORM and Skaltzers Contemporary Art are proud to present the first Australian exhibition of ROA.

A street artist with a fine art pedigree, ROA is considered among the most influential contemporary visual artists in the world. A modern day naturalist, famous for his large-scale depictions of animals on city walls around the world, ROA moves between continents and cities, observing and documenting the creatures that co-inhabit the urban landscape. His work has been exhibited in galleries throughout Europe and the United States.

Leading up to his exhibition in Perth, FORM will host ROA in a journey to select locations throughout the Pilbara and South West of Australia. ROA will use this source material to create a new body of work, working from the historic-industrial workshops of Midland Atelier, in the old Midland Railway Workshops.

- ▼ Patrick Tjurrurayi, *Canning Stock Route Country* 2007
acrylic on linen, 122.6 x 187 cm
Papunya Tula Artists
National Museum of Australia
- Eubena Nampitjin, *Kinyu* 2007
acrylic on linen, 184.5 x 124 cm
Warlayirti Artists
National Museum of Australia
- ▲ ROA, *Opossum Family* 2011
San Francisco
Image courtesy of the artist

FORM - OFFSITE

PERTH CONVENTION AND EXHIBITION CENTRE

21 Mounts Bay Road, Perth

Gallery hours: Mon – Fri 10am – 6pm, Sat 10am – 5pm, Sun 11am – 5pm

Free Admission

canningstockrouteproject.com



YIWARRA KUJU THE CANNING STOCK ROUTE

2 – 27 NOVEMBER

Yiwarra Kuju: the Canning Stock Route tells the story of Western Australia's legendary droving highway through the eyes of Aboriginal artists. It is a story of Country, culture and family; of history, first contact and diaspora, interpreted through art, oral history and award-winning new media. Attracting more visitors to the National Museum of Australia in 2010 than any exhibition in its history *Yiwarra Kuju* returns to Western Australia as the cultural backdrop to the Commonwealth Heads of Government Meeting (CHOGM) in October and will open as a free show throughout November at the Perth Convention and Exhibition Centre. *Yiwarra Kuju* was jointly produced by WA cultural organisation FORM and the National Museum of Australia.



GALLERY CENTRAL

12 Aberdeen Street, Perth

Gallery hours: Mon – Fri, 10am – 4.45pm, Sat 2 – 4.45pm (varies)

Free Admission

T 9427 1318

gallerycentral.com.au gallery@central.wa.edu.au

ANGEL HAIR – CONTEMPORARY WA ART FROM THE KERRY STOKES COLLECTION

19 SEPTEMBER – 7 OCTOBER

The works in this exhibition explore the shift that occurred from art being about private experiences to art that deals with essentially shared social and cultural issues. It draws on ethereal elements of the Collection in reference to the mysterious substance, *Angel Hair*, said to emanate from UFOs. What happens when such subversive and impersonal stuff starts falling from the sky right outside your own town?

REVEALED – EMERGING ABORIGINAL ARTISTS FROM WESTERN AUSTRALIA

24 OCTOBER – 12 NOVEMBER

An exhibition launching a new generation of artists. Artistic talent emerges at all ages. This project aims to build the careers of little known Aboriginal artists from all corners of the State.

REVEALED – MARKETPLACE

FRIDAY 28 - SATURDAY 29 OCTOBER 12 - 4PM

Find an Aboriginal art treasure in our bustling marketplace! Buy direct from Aboriginal artists and Art Centres from across WA. An inspiring and affordable range of painting, carving, weaving and sculpture from a vast region, and a chance to meet the artists.

Revealed is produced in partnership with the Department of Culture and the Arts and supported by the Department of Indigenous Affairs and the Federal Government through the Office of The Arts. Part of Commonwealth Festival (Perth 2011)

A SEASON OF GRAD EXHIBITIONS CREATIVE INDUSTRIES

3D DESIGN

21 – 25 NOV AT CENTRAL PARK

GRAPHIC DESIGN

24 – 26 NOV AT GALLERY CENTRAL

PHOTOGRAPHY

30 NOV – 3 DEC AT GALLERY CENTRAL

FASHION & TEXTILE DESIGN

29 NOV PARADE

VISUAL ART, JEWELLERY & OBJECT DESIGN

8 – 14 DEC AT GALLERY CENTRAL.

▲ Louise Malarvie, *Dancing Design* 2011 (detail)
ochre on canvas, 45 x 100 cm
Courtesy Waringarri Aboriginal Arts for *Revealed*



CAROL WELLS LOCAL GRAVITY – UNKNOWN ARCHITECTURE

5 OCTOBER – 5 NOVEMBER

This exhibition will present a body of work created by Carol Wells in both New York and Fremantle – who worked for 18 years as a designer and art director creating sets on sound stages and on location, for television advertising, film and music videos.

The exhibition includes sculpture, oil painting and installation as well as large backdrop pieces, a room-size 'tower' made of recycled packaging, and various paper and cardboard sculptures suspended from the ceiling and walls.

TILT 2011 – CAPITAL CITY TOM MÜLLER

12 NOVEMBER – 18 DECEMBER

In 1828 Captain James Stirling considers Heathcote as the site for Western Australia's capital city.

What if Heathcote had been chosen over Perth?

For *Tilt 2011*, Tom Müller will develop a series of fictional scenarios inspired by past residents, events and history of the site. Borrowing from a multidisciplinary approach including film, installations and found objects, the artist will present a multi-faceted interpretation of Heathcote if it were Western Australia's capital city.

Tilt is an initiative by the City of Melville where one artist each year is invited to showcase their talents by exploring an aspect of Heathcote's multi-layered history, using their chosen art medium or a new exploratory medium.

► Carol Wells, *Big Blue* 2005
Courtesy of the artist

▲ Tom Müller, *Swan Scalp Study* 2011
manipulated found image
Courtesy of the artist



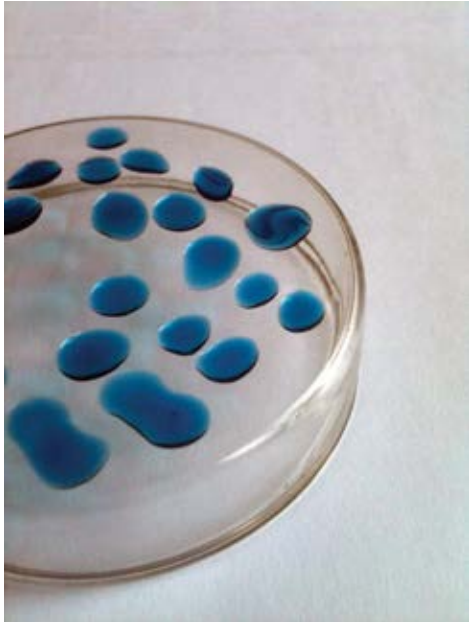
HEATHCOTE MUSEUM AND GALLERY

Heathcote Cultural Centre, Duncraig Road, Applecross
 Gallery hours: Tue – Fri, 10am – 3pm, Sat & Sun 12 – 4pm
 Closed Public Holidays, Free Admission
 T 9364 5666
melvillecity.wa.gov.au claire.bushby@melville.wa.gov.au



JOHN CURTIN GALLERY

Curtin University, Kent Street, Bentley
 Gallery hours Mon – Fri, 12 – 5pm, Sun 30 October & 27 November, 1 – 4pm
 Free Admission, Closed Public Holidays
 T 9266 4155
johncurtingallery.curtin.edu.au gallery@curtin.edu.au



- ◀ Eden Lennox, *Wink* 2010
 Copper, 925 silver (with chemical patina), gold leaf,
 food tins, brass bolts, vintage dolls eye
 dimensions variable
 Courtesy of the artist

- ▲ Miik Green, *Petri Sweat #1* (detail) 2011
 mixed media on glass, dimensions variable
 Courtesy of the artist

SODA11

14 OCTOBER – 9 DECEMBER

SoDA11 features a collection of thought-provoking art works by graduates who explore tradition and customs, the environment, light and notions of what is precious.

In partnership with Curtin University's School of Design and Art (*SoDA*), the Gallery will showcase a group exhibition featuring Charissa Delima, Terina Eastman, Eden Lennox, Peng Liu, Kevin Raxworthy and Joanne Richardson whose work spans video, jewellery, drawing, installation and painting.

The annual *SoDA* exhibition presents artists on the cusp of strong careers and this exhibition is the first glimpse of their work in a professional setting. This year *SoDA11* will open concurrently with the Department of Art's own *Degree Show*.

UNNATURAL PHENOMENA MIIK GREEN

14 OCTOBER – 9 DECEMBER

Unnatural Phenomena is a collaborative exhibition featuring artist Miik Green and nanotechnologist Chris Malajczuk.

Green and Malajczuk have created a series of stunning works consisting of biological-inspired, small-scale sculptural works and a two-dimensional series of mixed-media works, representative of microscopic tissues and cells. Drawing from the the scientific methods of Nobel Prize winning biochemist Christian B. Anfinsen, Green and Malajczuk have explored how the laws of thermodynamics encourage the formation of complex organic structures, capturing and conveying these notions in hydrophobic suspensions.

The exhibition, which has been funded by Curtin Student Guild's On Show Arts Grant, is a response to the 2011 theme 'The Right Chemistry'.

LAWRENCE WILSON ART GALLERY

The University of Western Australia, 35 Stirling Highway, Crawley
 Gallery hours: Tue – Fri 11am – 5pm, Sun 12 – 5pm
 Closed Public Holidays, Free Admission
 T 6488 3707
lwgallery.uwa.edu.au info@lwgallery.uwa.edu.au





RECENT PAST AUSTRALIAN PAINTING OF THE 70^S AND 80^S

14 AUGUST – 7 DECEMBER 2011

Recent Past is an exciting selection from the University of Western Australia's collection of important works that showcase the enormous artistic diversity in Australia over a two-decade period. It samples abstract, figurative and neo-expressionist forms, exploring important ideas from a critical era of Australia's history.

Through the work of 36 artists, half of whom worked in Western Australia, ideas such as Abstraction, representation, politics and local history, the life of the mind and spirit, the processes of painting and seductiveness of colour were all explored. Some, such as Sydney Ball, who travelled to New York and worked with Mark Rothko, brought back new ideas and inspiration on painting that effected the direction of Australian art.

Recent Past includes hard-edge and resolutely abstract styles such as Sydney Ball's *Ispahan*, 1967, the expressionist CoBrA inspired works of Lidija Dombrovska Larsen's *The lonesome traveller*, 1989-91, and Sydney Nolan's giant multi-part *Flower panels [Paradise Garden series]*, c. 1968 and *The Snake*, 1973.

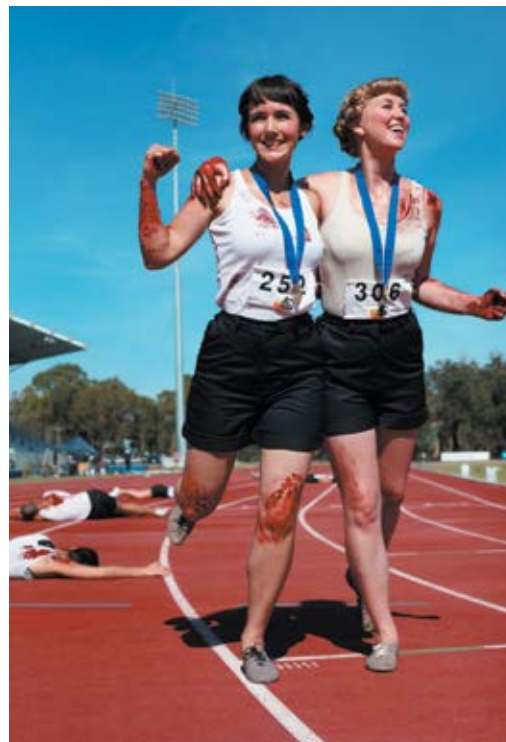
Through these paintings, *Recent Past* offers Perth audiences a sense of the energy and excitement of Australian painting during this significant period in our history. The exhibition has been extended to 7th December with numerous public programs. See the website for details: www.lwgallery.uwa.edu.au

▲ Carol Rudyard, *Wall hanging screenprint I* c. 1974
fabric dye on cotton on canvas, 168.2 x 274.5 cm
The University of Western Australia Art Collection,
University Senate Grant, 1974
© The University of Western Australia.

◀ Bob Birch, *Heartbreaker - doo doo doo doo doo* 1973-74
synthetic polymer paint, canvas, paper, rubber and
fabric, diptych 203 x 340 cm
The University of Western Australia Art Collection,
McGillivray Bequest Fund, 1975
© The University of Western Australia.

PERTH INSTITUTE OF CONTEMPORARY ARTS

Perth Cultural Centre, James Street, Northbridge
Gallery hours: Tue – Sun, 11am – 6pm
Free Admission to all exhibitions
T 9228 6300
pica.org.au info@pica.org.au



STADIUM TARRYN GILL & PILAR MATA DUPONT

3 SEPTEMBER - 30 OCTOBER

Stadium is an exhibition by celebrated Western Australian artists Tarryn Gill & Pilar Mata Dupont. Popular culture, gender stereotypes and sexual power are the focal points of their highly stylised and theatrical photographs, referencing 20th century sources ranging from Busby Berkley choreography and Hollywood musicals to Leni Riefenstahl propaganda films. An extension of this exhibition is the artists' performance work, *Ever Higher*, where a Leni Riefenstahl character delivers a choreographed performance on a single rope surrounded by a team of cheerleaders.

WRONG ANGLES ALEX SPREMBERG

3 SEPTEMBER - 30 OCTOBER

Wrong Angles is a major new solo show of work by the highly acclaimed Western Australian artist, Alex Spremberg. For the past 30 years Spremberg has relentlessly interrogated the possibilities of painting. In this major exhibition, the artist seeks to integrate everyday materials such as cardboard boxes and newspaper into his paintings. The five news series of bold objects and collages focus on two aspects that exert an extraordinary impact on our daily lives: the distribution of consumer goods and the flow of information through the media.

▲ Tarryn Gill & Pilar Mata Dupont, *Bloodsport* 2010
Courtesy of the artists and Goddard de Fiddes Gallery, Perth. Photo: Kim Tran

▶ Alex Spremberg, *Paint-Skulls* 2011 (detail)
Courtesy of the artist, Galerie Düsseldorf, Perth and Karen Woodbury Gallery, Melbourne



PRISON GALLERY

Fremantle Prison, The Terrace, Fremantle
Gallery hours: 9am – 5pm daily, until 9pm Wed & Fri
Free Admission
T 9336 9200
fremantleprison.com.au curatorial@fremantleprison.com.au



NATIONAL PHOTOGRAPHIC PORTRAIT PRIZE

CONTINUING UNTIL 27 NOVEMBER

The National Photographic Portrait Prize is an annual event promoting portraiture by contemporary Australian photographers. The Prize provides an opportunity for photographers whose work is unpublished, or carried out as a sideline, to present their work to art professionals and the public. The 55 portraits on display were chosen by four judges from 1,200 entries, submitted online. These extraordinary photographs range from intimate and haunting family portraits to entertaining staged images to complexly executed works.

A National Portrait Gallery exhibition

This exhibition is supported by the National Collecting Institutions Touring and Outreach Program, an Australian Government program aiming to improve access to the national collections for all Australians.

ROCK BREAKERS

CONTINUING UNTIL 2012

Rock Breakers tells the story of Western Australia's first official museum which opened at Fremantle Prison in 1881. The Geological Museum was initiated to help chart and aid geological exploration of the colony. It would eventually evolve into the Western Australian Museum. Featuring artefacts from Fremantle Prison, the Western Australian Museum, the State Library of Western Australia and the State Records Office of Western Australia.

◀ Alexia Sinclair
Napoleon I – Emperor of the French 2010
digital print, 63.5 x 63.5 cm
Courtesy of the artist

▲ 2011 Winner
Jacqueline Mitelman, *Miss Alessandra* 2010
digital print, 48.0 x 38.0 cm
Courtesy of the artist

NICOLLE DESMARCHELIER

IRAQUI

7 OCTOBER – 14 OCTOBER

Iraqi meaning *Thankyou* in Shipibo, at Spectrum Project Space, is an exhibition of works in progress for Phd. Visual Arts candidate, Nicolle Desmarchelier.

In 2010 Desmarchelier completed a three month residency, interacting with and working alongside the Shipibo women artists of the Amazon lowlands in the east of Peru. The artist was a guest in different villages, which enabled her to conduct extensive interviews while sharing food and houses with the Shipibo women and their families who hand stitch their cloths. Often their only common language was mutual hand making within their respective life-worlds. This dynamic is the catalyst for Desmarchelier's doctoral research and creative praxis.

Iraqi, at Spectrum Project Space, is a way of communicating the artists creative response and the value of momentary impressions of the Shipibo oral culture and tradition, which is passed on in the forms of stories, song, patterns, colours and myths. The purpose of this exhibition is to reflexively respond to the cultural interface of the Shipibo women artists and the artist. In order to explore this intercultural dialogue, Desmarchelier will be using sound, projection, Shipibo hand made cloths and hand made stitched pieces.

YOUNG ORIGINALS

27 OCTOBER – 4 NOVEMBER

The *Young Originals* annual exhibition provides an opportunity to celebrate the creative and innovative Visual Arts and Design programs offered in Western Australian public secondary schools.

The exhibition features visual arts and design works across a range of mediums including painting, sculpture, textiles, printmaking, photography, ceramics, graphic design, video art and computer generated design.

SOUND SPECTRUM FESTIVAL

7 NOVEMBER – 11 NOVEMBER

The annual Sound Spectrum festival set to be held in November 2011, will be curated by Lindsay Vickery, musician, composer and Lecturer at the Western Australian Academy of Performing Arts (WAAPA).

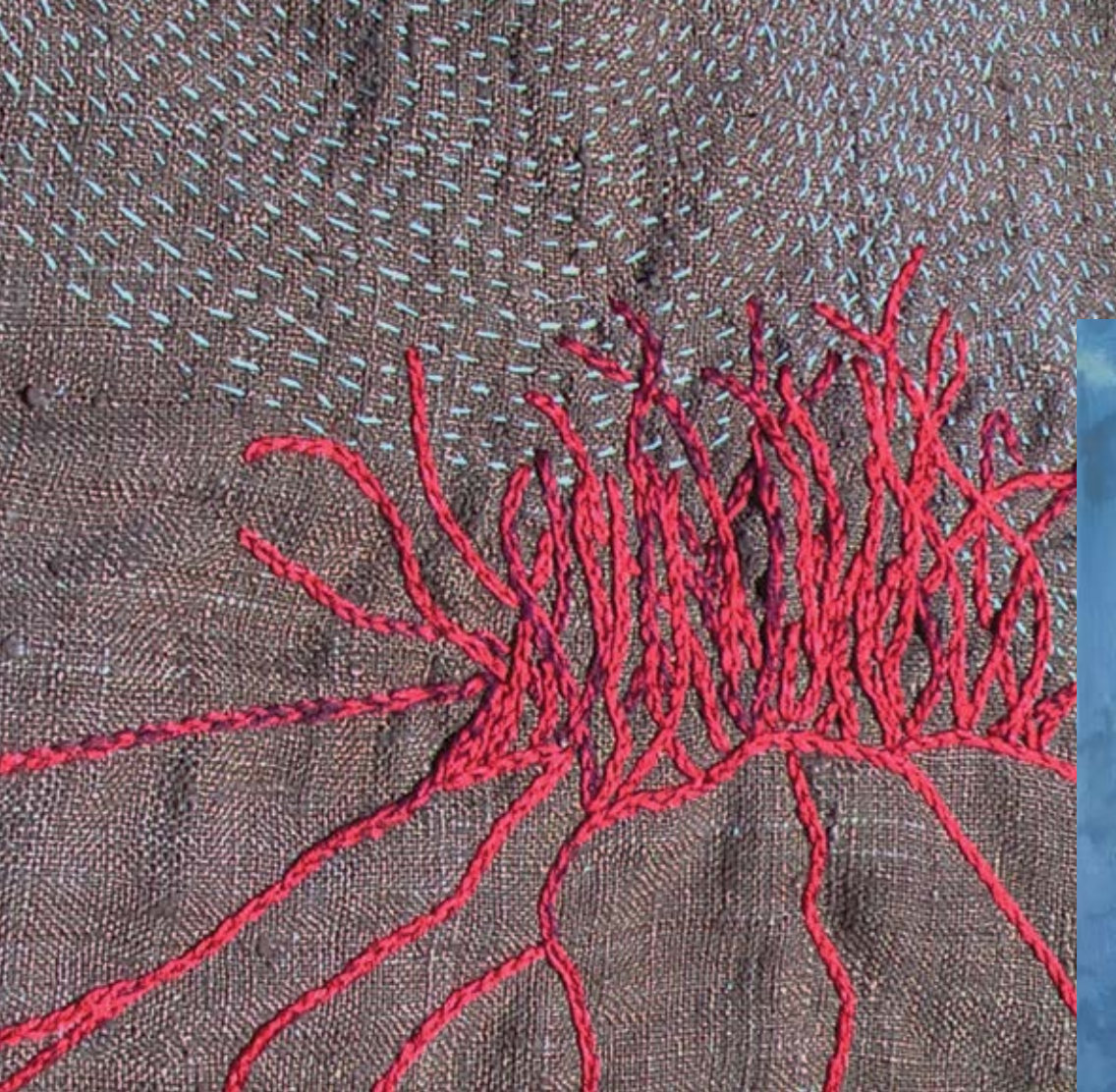
◀ Nicolle Desmarchelier, *Untitled* 2011 (detail)
Courtesy of the artist

PHOTOMEDIA GRADUATE SHOW

24 NOVEMBER – 9 DECEMBER

The annual Edith Cowan University Photomedia Graduation show showcases the work of third year students.

Their work is both creative and critical at once – an attempt to speak in visual terms while learning how to critique visual languages and ideologies.



THE MOORES BUILDING CONTEMPORARY ART GALLERY

46 Henry Street, Fremantle
 Gallery hours: Mon – Sun, 10am – 4pm
 Free Admission, managed by Fremantle Arts Centre
 T 9335 3519
moores.org.au richiek@fremantle.wa.gov.au



SPECTRUM PROJECT SPACE

Edith Cowan University
 Building 3, 2 Bradford St, Mt Lawley
 Check website for opening times
 T 9370 6906
scca.ecu.edu.au/projects/spectrum spectrum@ecu.edu.au

INTERACTIVE ARTS SEASONS

15 – 30 OCTOBER

An exhibition exploring our relationship to the seasons through art. Curated by Interactive Arts, a group of 25 fill gallery spaces with their various styles and mixed media in response to the theme.

ARTISTS FROM THE FREEDOM SCHOOL. GROUP EXHIBITION

5 – 20 NOVEMBER

The Freedom School is a peer studio-based art group founded by David Giles. Over 50 artists, nine of them award-winning, participate in this exhibition, exploring the possibilities of painting in a show characterized by colour, vibrancy, vitality and energy. Each day artists work in the main gallery to enable audiences to witness their processes first-hand.

GEORGE HAYNES RECENT WORKS

2 – 18 DECEMBER

Recent paintings on a marine theme by George Haynes, one of WA's most accomplished artists, with special guest painters Robert Juniper, Jeremy Kirwin-Ward, Roger Leever, Jane Martin, Jonathon Snowball and Peter Fitzsimmons. This exhibition will be an outstanding example of what Western Australia painters have to offer.

◀ George Haynes, *Abrolhos Moonlight* 2011
oil on canvas, 138 x 152 cm
Courtesy and © the artist

UWA Museums



THE UNIVERSITY OF
WESTERN AUSTRALIA
Achieve International Excellence

IMAGELAB

DESIGN GRAPHIC / WEB

Imagelab specialises in publications and websites for individuals and organisations working in the arts and creative industries.

Imagelab's technical and creative expertise stems from years of experience working within the arts industry, and as practising artists ourselves. This has provided us with a unique creative perspective.

Our websites allow you to create, submit and manage your own content without requiring technical knowledge. We provide a one-hour workshop on managing content and a manual as a standard part of every website.

about us

Image lab is a multi-disciplinary creative studio and production house. Our services include photography, graphic design, art reproduction, and printing. Our knowledge and experience of digital production places us in unique position as it enables us to control a project from start to finish.

We value the highest quality in production and use the latest technology without losing touch with artistic values and notions of beauty, meaning and authenticity.

We have collaborated and produced work for numerous well-known artists, designers, organisations, galleries and Government Departments. Outcomes find their way into publications, websites, artworks, exhibitions and in various digital media.

Founded and directed by photographer & artist Tony Nathan
Creative Director, artist & designer Tom Muller

imagelabstudio.com

info@imagelabstudio.com

ARCHIVAL PRINTING

Imagelab uses a state-of-the-art printer using pigment ink to produce the finest archival art gallery prints of the highest quality. These Giclee prints are produced to meet the exceptionally high standards of galleries and collections, suitable for sale and exhibition.

Imagelab also offers high-end scanning and retouching services, giving artists full input into every step of the process and optimum conditions for printing.

PHOTOGRAPHY

Imagelab is the only studio in Perth offering photography and documentation services using the multi-shot digital Hasselblad camera, capable of producing international standard art documentation with a depth of field and colour second to none. This system is the new international benchmark in digitisation and used by prominent art institutions including the Tate Gallery in London and the Metropolitan Museum in New York.

Imagelab offers this service to clients in its studio or on location.



ARTSOURCE 25TH ANNIVERSARY OPEN STUDIOS

Sunday 23 October 2011, 3-5pm • 8 Phillimore St Fremantle

STEPHEN ARMITSTEAD PETER BARKER REBECCA BAUMANN JACINDA
BAYNE SEBASTIAN BEFUMO ELAINE BRADLEY TIM BURNS RACHEL
COAD RICHARD COLDICUTT IAN DE SOUZA CLARE DECHTON LIESBETH
GOEDHART CHRIS HOPEWELL SIMONE JOHNSTON ANDRE LIPSCOMBE
LUCILLE MARTIN LIA MCKNIGHT STUART MCMILLAN LAUREL NANNUP
SARAH NELSON KATHRIN PETERS STEPHEN SCHULYTA CAROL WELLS

a o u c e r t s r
t u c r e o r s a
a r r o t u c e s
u o e r s a c r t
artsource
c e r s a o r t u

www.artsource.net.au

EMERGING

ABORIGINAL ARTISTS FROM WESTERN AUSTRALIA

PERU BEAU LED

EXHIBITION: 24 OCT – 12 NOV 2011

Showcasing 47 next generation artists

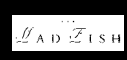
ART MARKETPLACE: 28/29 OCT, 12– 4pm

GALLERY CENTRAL: 12 Aberdeen St, Northbridge
T: 9427 1318 www.gallerycentral.com.au

COMMONWEALTH FESTIVAL (PERTH 2011)



COMMONWEALTH FESTIVAL Perth 2011 | EXTRAORDINARY
WESTERN AUSTRALIA





Janet Holmes à Court

COLLECTION

RECENT ACQUISITIONS



The Holmes à Court Collection, started in the early 1970s, grew from the family's interest in Australian and Indigenous art. It has steadily developed over time into an internationally renowned collection that documents many areas of Australian cultural significance. This background has provided the focus for what is an eclectic and very personal collection. A core philosophy has been to look at artists and their works in terms of the connections and relationships that can be formed when developing exhibitions, rather than a chronological or historical recording of Australian art history.

Today the Collection consists of more than 4,000 registered artworks and continues to be an important collection of Australian and Western Australian art, with a strong emphasis on Indigenous works. We share the Collection with the public through our own exhibitions at the Holmes à Court Gallery at Vasse Felix, and through loans of works to other public institutions for exhibition and publication. The Collection is also made available where possible for curatorial research.

Since December 2008 Janet Holmes à Court has been the sole owner of what is now known as the Janet Holmes à Court Collection.

► George Andric, *everything changes everything returns* 2010
stainless steel, 250 x 120 x 50
Image courtesy of the artist. Sculpture by the Sea, Cottesloe 2011

◄ Clifton Mack, *Jirida (Increasing Site)* 2010
acrylic on canvas, 124 x 166.5 cm
Copyright the artist. Image courtesy of Yinjaa-Barri Art.

2011 Artwork Commission



CITY of PERTH

PERTH Gregory Pryor

This exhibition showcases the significant new artwork by Gregory Pryor who was awarded the inaugural City of Perth Artwork Commission.

Council House Foyer
27 St Georges Terrace Perth
22 September to 2 December 2011
8.30am - 5.00pm Monday-Friday

For more information contact the City of Perth Art Curator on 9461 3209

2011 INVITATION ART AWARD

\$15,000 Acquisitive Award
13 October – 1 November

Lakeside Joondalup
Shopping City, open
during shopping hours.

An eclectic, annual survey
featuring 40 of Western
Australia's leading
contemporary artists.
For a full list of exhibiting
artists and further information
visit joondalup.wa.gov.au
or call 9400 4924.

BACKGROUND IMAGE: Graeme
Burge, *Totem for a Herd with Branded
Hide, Swearing at the Sun (detail)*, winner
of the 2010 Invitation Art Award.

PREMIER PARTNER

Bedshed

KEY PARTNER



WEST COAST INSTITUTE
OF TRAINING

MEDIA PARTNER



VENUE PARTNER



2011
SATURDAY 5
- SUNDAY 13
NOVEMBER
10AM - 4PM

AWARD & EXHIBITION

Civic Complex, 25 Cedric Street, Stirling
QUALITY ARTWORKS ON SHOW

All artworks available for purchase
For more information visit www.stirling.wa.gov.au
or phone 9345 8555

Bonett

ECU

Karrinyup

Taylor Design

VIVA!

Whitwood
PICTURE FRAMES
AND GLAZING



Mine Own Executioner

14 October - 13 November
Contemporary, West Australian Self
Portraiture. Curated by Peggy Lyon.

Meticulous Miniatures

18 November - 24 December
Powerful works in miniature.

Mundaring Arts Centre
7190 Gt Eastern Hwy
Mundaring 6073
ph (08) 9295 3991
info@mundaringartscentre.com

Mon - Fri 10 - 5; Sat - Sun 11 - 3; closed public holidays
www.mundaringartscentre.com

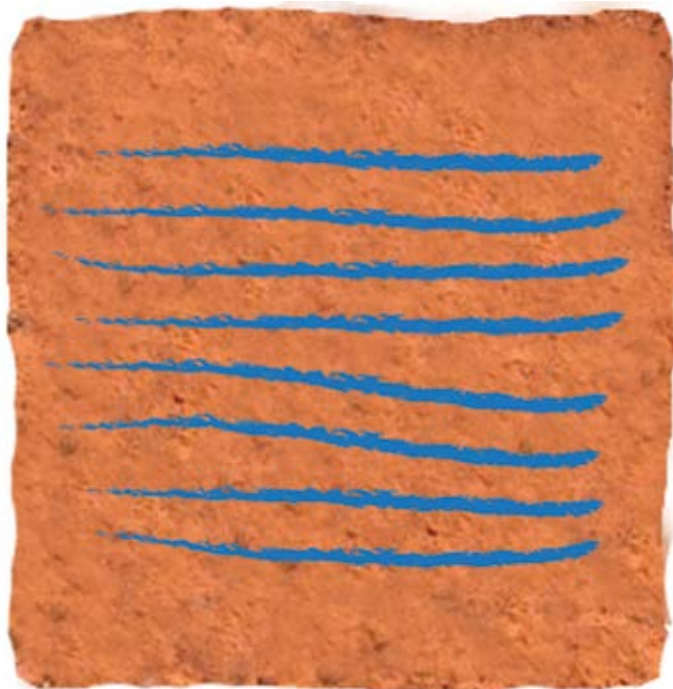
Caitlin Yardley, *I am vertical (2011)*, flowers, glass jars, vases, bottles, steel trolley



MID WEST ART PRIZE 2012



Grant Woodhams MLA



\$45,000 Non Acquisitive Awards
Entry Forms Available Late September 2011
Check out our website www.artgallery.cgg.wa.gov.au



24 Chapman Road, Geraldton
9964 7170

Tuesday to Saturday 10am–4pm
Sunday & Public Holiday's 1pm–4pm

grag@artgallery.wa.gov.au
www.argallery.cgg.wa.gov.au



Give your art *The Edge*

Custom Frames **challenge** the senses,
engages the spirit
and **transforms** a room

At Arts Edge Gallery, we believe art and creativity are
all inspired by people, places and things in the
world around us. Let us share some inspiring ideas with you!



Custom Framing~Canvas and Photographic Printing
Digital Restoration~Acrylic Printing~Acrylic Blocks
Object Framing~Military Framing

Limited Edition Artists and Photographers~Tracking Systems

Shop 14 Joondalup Gate, 21 Joondalup Drive, Edgewater, WA 6027
p: 9300 1466 e: service@artsedge.com.au w: www.artsedge.com.au



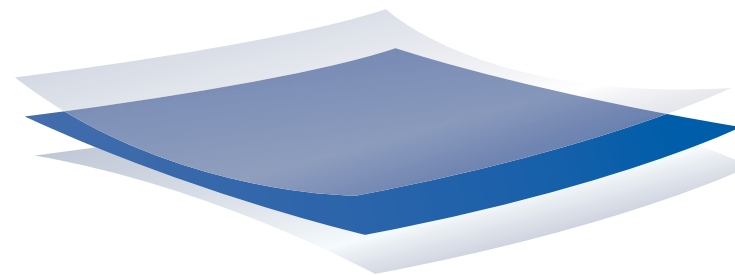
ART PRESENTATIONS

DISTINCTIVE FRAMING & PRESENTATION TECHNIQUES
WORKING WITH WESTERN AUSTRALIAN ARTISTS SINCE 1982

30 GRAYLANDS ROAD, CLAREMONT
PERTH, WESTERN AUSTRALIA 6010
T 9385 1200

CONTEMPORARY ARTIST BRENDON DARBY USES ART PRESENTATIONS

Brendon Darby, *September Window* 2011 (detail)
oil on canvas, 130 x 210 cm
Courtesy of the artist and Linton & Kay Fine Art, Subiaco



PLASTIC SANDWICH

GRAPHIC PRESENTATION SERVICES

78 Jersey Street, Jolimont
Western Australia

(08) 9387 8887

reception@plasticsandwich.com.au

www.plasticsandwich.com.au



Helping you exceed your expectations

P (08) 9427 3500 F (08) 9427 3535 EMAIL sales@lambprint.net.au

PERFECTING THE LOST CRAFT

For over three decades, Lamb has been at the forefront of quality, national award-winning books and publications-recovering the timeless art of printing and connecting the technology of today with the lost craftsmanship of yesteryear. Our passion for perfection in print makes us a reliable producer of quality publications.

When you're ready to transfer your vision to the printed page, please call us.
We would love to be involved.

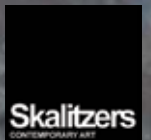


ROA OPENING FRIDAY 21ST OCTOBER, 2011 @ 6PM

FORM and Skaltizers present the first solo show in Australia by internationally acclaimed Belgian artist ROA.

Exhibition runs until 13th January, 2012

FORM Gallery 357 Murray St, Perth
Hours: Monday – Friday 9am – 5pm
Contact 08 9226 2799 / mail@form.net.au



form.

building a state of creativity

Photo by ROA:
Credit ROA | [flickr.com/photos/roagraffiti](https://www.flickr.com/photos/roagraffiti)



CIRCUIT

Western Australian Contemporary Art Galleries

SUBSCRIPTION

ONE YEAR (FOUR ISSUES) FOR \$16.50 *

Please complete this form below or a photocopy, make your cheque or money order payable to
The Association of Western Australian Commercial Art Galleries Inc and post to:

CIRCUIT SUBSCRIPTION

C/- Gallery East
94 Stirling Highway
North Fremantle, WA 6159

Name

Address

Post Code

E-mail

Telephone Date

Please note: The red dot indicates that renewal of your annual subscription is due. includes \$1.50 GST



YIWARRA KUJU THE CANNING STOCK ROUTE

Limited Season: 2 – 27 November, 2011
Perth Convention and Exhibition Centre
FREE ADMISSION



PERTH CONVENTION AND
EXHIBITION CENTRE
WESTERN AUSTRALIA



COMMUNITY PARTNER



PRESENTING PARTNER



Government of Western Australia
Department of Culture and the Arts

MAJOR GOVERNMENT PARTNER



Australian Government
National Collecting Institutions
Touring & Outreach Program

Opening hours: Monday to Friday 10am to 6pm, Saturday 10am to 5pm, Sunday 11am to 5pm
PCEC, Pavillion 6, 21 Mounts Bay Road, Perth
Contact FORM: (08) 9226 2799 - canningstockroute@form.net.au - www.canningstockrouteproject.com/yiwarraakuju